

Lower Thames Crossing

6.2 Environmental Statement Figures

Figure 2.4 - Environmental Masterplan Section 13 (9 of 10) (Tracked changes version)

APFP Regulation 5(2)(a)

Infrastructure Planning (Applications:
Prescribed Forms and Procedure)
Regulations 2009

Volume 6

DATE: August 2023
DEADLINE: 2

Planning Inspectorate Scheme Ref: TR010032
Application Document Ref: TR010032/APP/6.2

VERSION: 2.0

Lower Thames Crossing

Figure 2.4: Environmental Masterplan

List of contents

	Page number
1 Environmental Masterplan: Section 13.....	1
1.1 Schedule of Plans included in this application document.....	1
1.2 Section 13 (Sheets 1-15)	2
1.3 Scheme Overview.....	4
1.4 Environmental Masterplan Legend	6
1.5 Section 13.....	8

1 Environmental Masterplan: Section 13

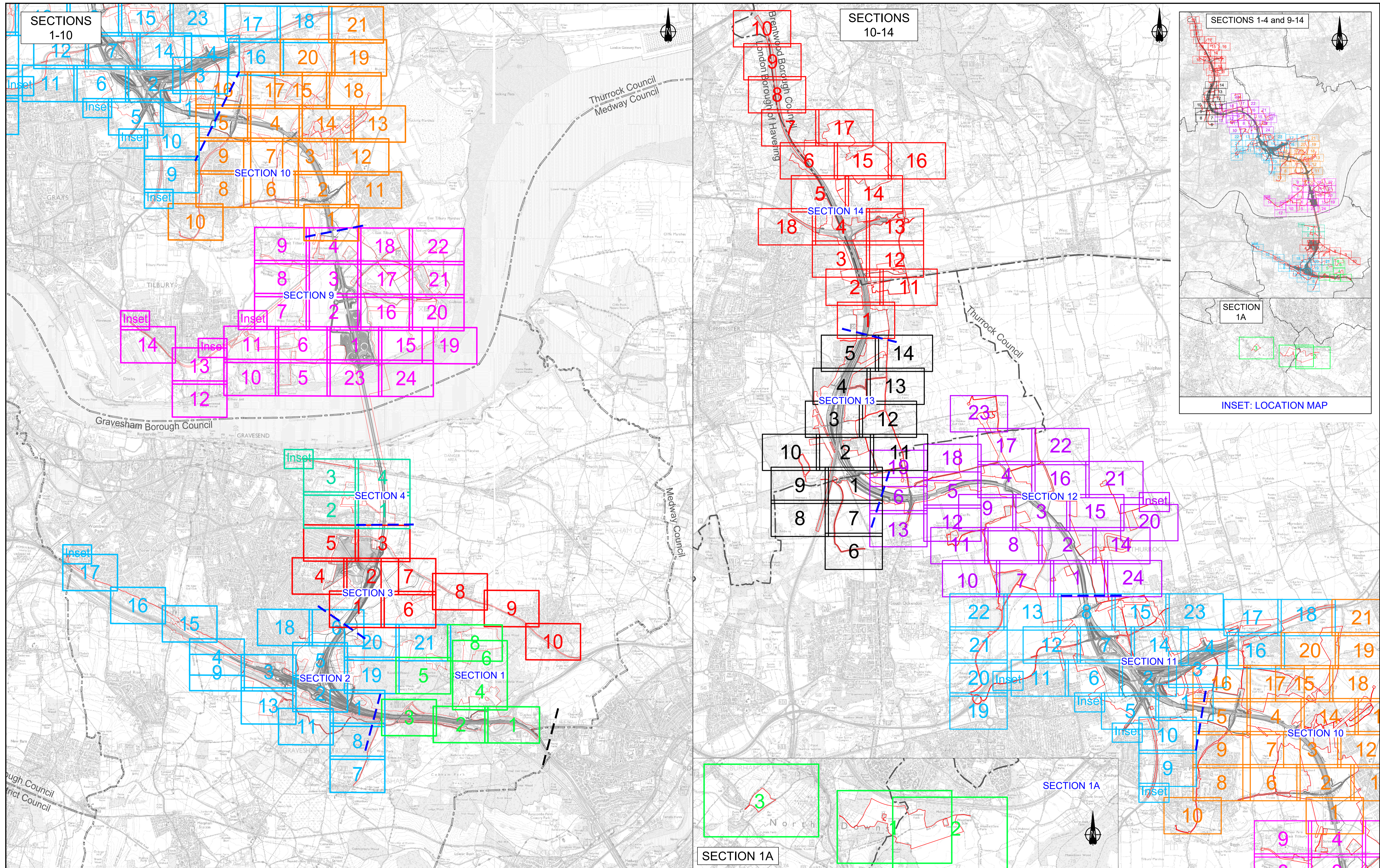
1.1 Schedule of Plans included in this application document

1.2 Section 13 (Sheets 1-15)

HE540039-CJV-EGN-S13_EN000000_Z-DR-ZZ- 00001 - Section Overview	TR010032/APP/6.2	P01.6
HE540039-CJV-EGN-S13_EN000000_Z-DR-ZZ- 00002 - Section 13 Sheet 1	TR010032/APP/6.2	P01.4
HE540039-CJV-EGN-S13_EN000000_Z-DR-ZZ- 00003 - Section 13 Sheet 2	TR010032/APP/6.2	P02
HE540039-CJV-EGN-S13_EN000000_Z-DR-ZZ- 00004 - Section 13 Sheet 3	TR010032/APP/6.2	P02
HE540039-CJV-EGN-S13_EN000000_Z-DR-ZZ- 00005 - Section 13 Sheet 4	TR010032/APP/6.2	P02
HE540039-CJV-EGN-S13_EN000000_Z-DR-ZZ- 00006 - Section 13 Sheet 5	TR010032/APP/6.2	P02
HE540039-CJV-EGN-S13_EN000000_Z-DR-ZZ- 00007 - Section 13 Sheet 6	TR010032/APP/6.2	P01.5
HE540039-CJV-EGN-S13_EN000000_Z-DR-ZZ- 00008 - Section 13 Sheet 7	TR010032/APP/6.2	P01.4
HE540039-CJV-EGN-S13_EN000000_Z-DR-ZZ- 00009 - Section 13 Sheet 8	TR010032/APP/6.2	P01.5
HE540039-CJV-EGN-S13_EN000000_Z-DR-ZZ- 00010 - Section 13 Sheet 9	TR010032/APP/6.2	P01.4
HE540039-CJV-EGN-S13_EN000000_Z-DR-ZZ- 00011 - Section 13 Sheet 10	TR010032/APP/6.2	P01.5
HE540039-CJV-EGN-S13_EN000000_Z-DR-ZZ- 00012 - Section 13 Sheet 11	TR010032/APP/6.2	P01.4

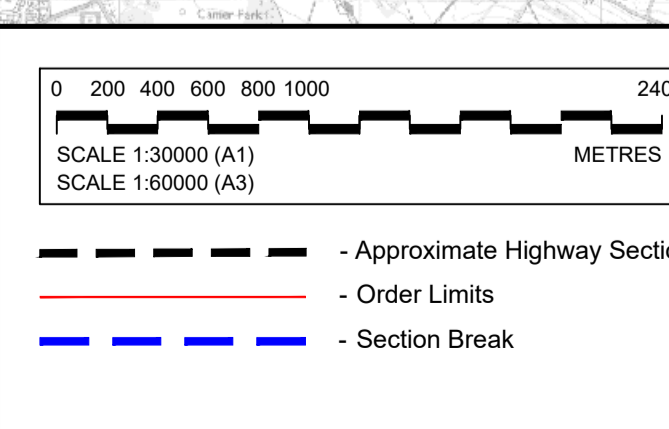
HE540039-CJV-EGN-S13_EN000000_Z- DR-ZZ- 00013 - Section 13 Sheet 12	TR010032/APP/6.2	P01.5
HE540039-CJV-EGN-S13_EN000000_Z- DR-ZZ- 00014 - Section 13 Sheet 13	TR010032/APP/6.2	P01.5
HE540039-CJV-EGN-S13_EN000000_Z- DR-ZZ- 00015 - Section 13 Sheet 14	TR010032/APP/6.2	P01.5

1.3 Scheme Overview



Contains Ordnance Survey data. © Crown copyright and database rights 2022. Ordnance Survey 100030649

Rev	Status	Rev. Date	Purpose of revision	Drawn	Check'd	Apprv'd
P01.3	SD	2021/09/23				



Section Layout Key:

1	Section S1 (Sheets 1 - 8)	10	Section S10 (Sheets 1 - 21)
1A	Section S1A (Sheets 1 - 3)	11	Section S11 (Sheets 1 - 22)
2	Section S2 (Sheets 1 - 21)	12	Section S12 (Sheets 1 - 24)
3	Section S3 (Sheets 1 - 10)	13	Section S13 (Sheets 1 - 14)
4	Section S4 (Sheets 1 - 4)	14	Section S14 (Sheets 1 - 18)
5	Section S5 (Sheets 1 - 24)		

NOTE: Development of the Project design has resulted in the removal of some sheets forming part of the Environmental Masterplan, where acquisition of land for the Project is no longer required. In this instance, the original sheet numbering has been retained and therefore the sheet numbering shown on this Scheme Overview plan is not always consecutive.

For information, the following sheets have been omitted:

Section 1

- Sheet 7 (HE540039-CJV-EGN-S01_EN000000_Z-DR-ZZ-00008)

Section 2

- Sheet 10 (HE540039-CJV-EGN-S02_EN000000_Z-DR-ZZ-00011)
- Sheet 12 (HE540039-CJV-EGN-S02_EN000000_Z-DR-ZZ-00013)
- Sheet 14 (HE540039-CJV-EGN-S02_EN000000_Z-DR-ZZ-00015)

Client: **national highways**

Project: **LOWER THAMES CROSSING**

Status	Application Document Number	Original Size	Revision
	TR010032/APP/6.2	A1	P01.3
Drawing title	Drawing Number		
ENVIRONMENTAL MASTERPLAN SCHEME OVERVIEW	HE540039-CJV-EGN-SZZ_EN000000_Z-DR-ZZ-00002		

1.4 Environmental Masterplan Legend

EXISTING FEATURES

General Features

- Existing WCH Route
- Overhead Power Lines

Environmental Features

- Retained Woodland, Trees and Hedges (within Order Limits)
- Retained Woodland, Trees and Hedges (outside Order Limits)
- Waterbodies / Ponds
- Watercourses
- Tree Preservation Orders Area
- Individual Tree Preservation Orders
- Veteran Tree

PROPOSED PROJECT FEATURES

- Order Limits
- Permanent Acquisition of Land

General Project Features

- Existing Overhead Power Lines to be Removed
- Indicative Diverted and Modified Overhead Power Lines
- Proposed / Improved WCH Route
- Diverted / Redesignated WCH Route
- Proposed Carriageway
- Proposed Retaining Wall
- Proposed Cutting
- Proposed Embankment
- Proposed False Cutting Earthwork (up to 4m height above carriageway level typically at 1(v) 4(h) gradient)
- Proposed Watercourse Diversion
- Proposed Attenuation Ponds / Water Bodies
- Proposed Highway Estate Boundary Fencing
- Reinstated HS1 'Meshed' Fencing
- Proposed Security Fencing (incorporating highway boundary fence)
- Proposed Fencing Gates
- Proposed Tunnel Portal Building Outline (sub-surface)
- Proposed Highway Lighting and Gantry
- Proposed Green Bridge
- Proposed Traveller Site Replacement

General Project Features cont.

- Proposed Replacement Open Space
- Proposed Replacement Common Land
- Proposed Recreational Sites

PROPOSED LANDSCAPE ELEMENTS

Grassland (LE 1)

- LE 1.3 Species Rich Grassland
- LE 1.31 Species Rich Chalk Grassland
- LE 1.32 Species Rich Annual Wildflower Grassland
- LE 1.4 Rock and Scree

Planting (LE 2)

- LE 2.1 Woodland
- LE 2.11 Woodland With Non-Native Species
- LE 2.14 Wet / Carr Woodland
- LE 2.2 Woodland Edge
- LE 2.22 Scrub Woodland
- LE 2.4 Linear Belt of Shrubs and Trees
- LE 2.5 Shrubs With Intermittent Trees
- LE 2.7 Scattered Trees
- LE 2.8 Scrub / Scattered Scrub

Hedges (LE 4)

- LE 4.3 Native Species Hedge (untrimmed)
- LE 4.4 Native Hedgerow With Trees

Individual Trees (LE 5)

- LE 5.1 Individual Trees

Wetland Habitats (LE 6)

- LE 6.11 Water Bodies – Standing Water
- LE 6.12 Water Bodies and Associated Plants – Shallow Scrape Habitat
- LE 6.2 Banks and Ditches
- LE 6.21 Banks and Ditches – High Tide Roost Features
- LE 6.4 Wet Grassland

General Project Features cont.

- LE 6.41 Marsh and Wet Grassland – Coastal Grazing Marsh
- LE 7.2 Green Roof
- LE 7.3 Car Park
- LE 7.4 Reinforced Earth Bund

Ecological Habitats (LE 8)

- LE 8.1 Open Mosaic Habitat
- LE 8.2 Ancient Woodland Compensation Planting
- LE 8.3 Woodland Mitigation Planting
- LE 8.4 Wetland / Fenland Creation
- LE 8.5 Ecology Pond (Indicative symbol only)
- LE 8.6 Acid Grassland Soil Salvage
- LE 8.7 Nitrogen Deposition (NDEP) Compensation Area

Earthworks

- Proposed Contours

PROPOSED ENVIRONMENTAL ELEMENTS

Noise (E 1)

- E 1.2 Acoustic Barrier-Built Elements (typically incorporating highway boundary fence)

Water (E 2)

- Flood Compensation Areas (E2-FCA)
- Flood Defence (E2-FD)

Ecological (E 3)

- E 3.2 Ecological Habitat Creation and Receptor Sites for Protected Species
- E 3.2 Ecological Protection Measures – Dormouse Boxes
- E 3.2 Ecological Protection Measures – Bat / Bird Boxes
- E 3.2 Ecological Protection Measures – Ecological Culvert
- E 3.2 Ecological Protection Measures – Bat Barn Block
- E 3.2 Ecological Protection Measures – Ecological Fencing (incorporating highway boundary fence)

NOTES:

Land Reinstatement

The Environmental Masterplan is intended to show the permanent landscaping and environmental mitigation features that are embedded in the operational design. Land temporarily impacted by construction would be reinstated to its former condition and composition upon completion, as far as reasonably practicable and as provided for in DCO Article 35, unless otherwise shown in the Environmental Masterplan.

WCH Terminology and Route Information

The term 'WCH Routes' (which includes Public Rights of Way) refers to routes for walkers, cyclists and horse riders and is used in the broad sense within the Environmental Masterplan to refer to routes intended for at least one (but not necessarily more than one) of those users. For further information, please refer to the Rights of Way and Access Plans (Application Document 2.7) and the draft Development Consent Order (Application Document 3.1).

Veteran Trees

Veteran trees shown on the Environmental Masterplan include those identified in the Ancient Tree Inventory and project-identified potential ancient or veteran trees.

Outline Landscape and Ecological Management Plan

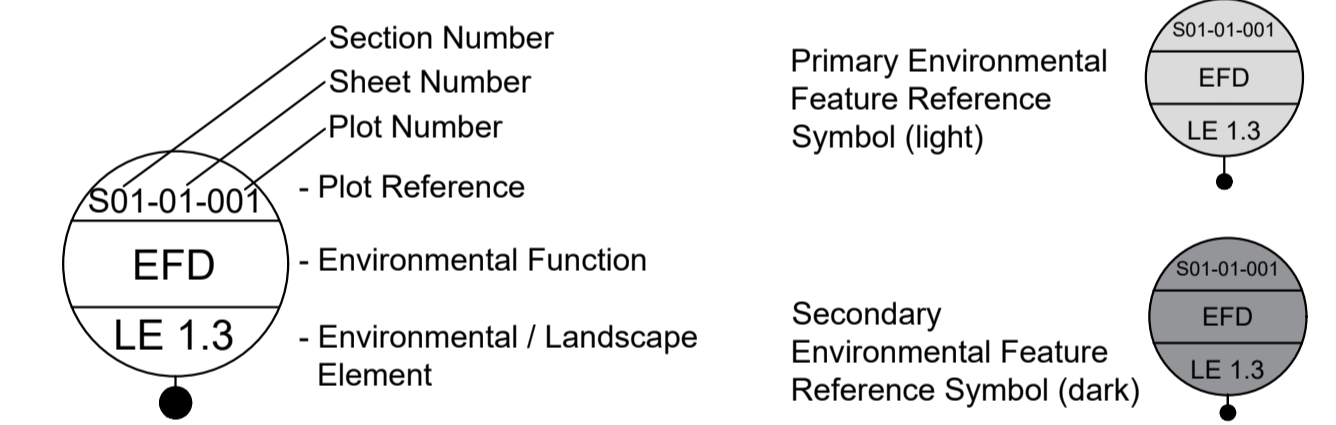
The outline Landscape and Ecology Management Plan (LEMP) separately sets out the proposed management for the environmental / landscape elements shown on the Environmental Masterplan. The Environment Masterplan secures the spatial extent and location of the environmental / landscape elements detailed within the outline LEMP. The outline LEMP details the management regimes, management expectations and monitoring requirements for the proposals in each land parcel shown on the Environmental Masterplan. It focuses on the management requirements for land parcels to be permanently acquired within the Order Limits and which perform specific landscape and ecological mitigation functions for the Project. For further detail regarding management requirements and principles, please refer to the outline LEMP (Application Document 6.7).

Existing WCH Routes

Existing WCH route information is based on Local Authority data. For further details, please refer to the relevant Local Authority Definitive Public Right of Way Map and Statement.

Environmental Feature Reference Symbol

An Environmental Feature Reference Symbol is provided for each environmental / landscape element. This contains a Plot Reference, the Environmental Function and the specific Landscape / Environmental Element. The Plot Reference is unique to each element labelled, and comprises the Section number, Sheet number and unique Plot number. Additional Environmental Feature Reference Symbols have been attributed to elements which span more than one page. The differences between the initial (Primary) Environmental Feature Reference Symbol and any additional (Secondary) versions are shown below.



Environmental Functions (EF)

- EFA Visual Screening
- EFB Landscape Integration
- EFC Enhancing the Built Environment
- EFD Nature Conservation and Biodiversity
- EFE Visual Amenity
- EFF Heritage
- EFG Auditory Amenity
- EFH Water Quality
- EFJ Agricultural / Highway Boundary
- EFK Access

Project Design Report

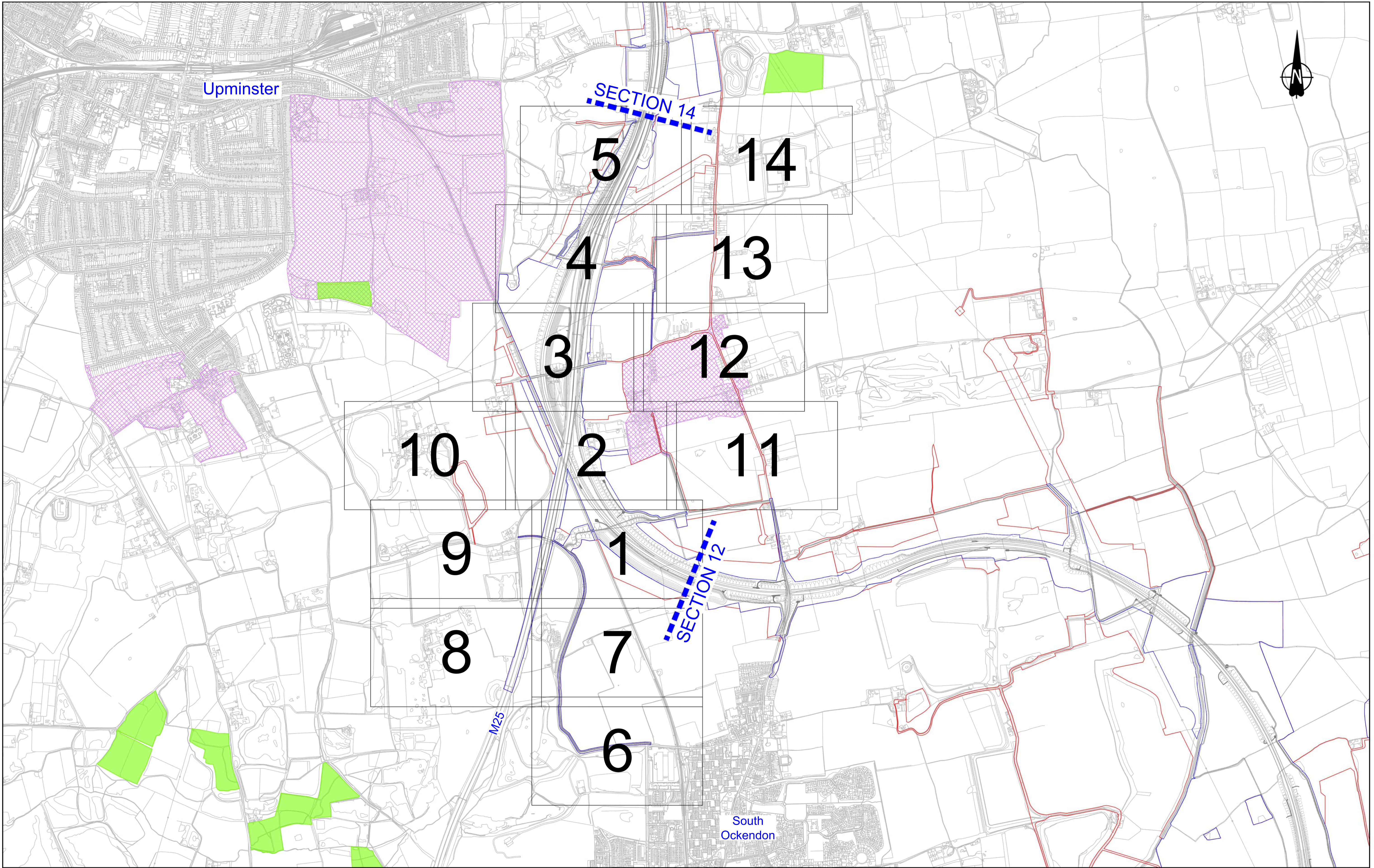
For further detail on the Landscape Design and Special Category Land shown within these plans, as well as the associated background and approach, please refer to the Project Design Report, Volume 2 Book of Plans, and Design Principles document (Application Documents 7.4, 6.2 and 7.5 respectively).

Contains Ordnance Survey data. © Crown copyright and database rights 2022. Ordnance Survey 100030649

Rev	Status	Rev. Date	Purpose of revision	Drawn	Check'd	Apprv'd

	Status Initial Status or WIP	Original Size A1	Revision P01.6
	Application Document Number TR010032/APP/6.2	Scale	Drawing title ENVIRONMENTAL MASTERPLAN LEGEND
Project LOWER THAMES CROSSING	Drawing Number HE540039-CJV-EGN-SZZ_EN000000_Z-DR-ZZ-00001		

1.5 Section 13



Contains Ordnance Survey data. © Crown copyright and database rights 2022. Ordnance Survey 100030649

0 100 200 300 400 500 600 700 800 900 1000
 SCALE 1:5000 (A1)
 SCALE 1:10000 (A3)
 METRES

P01.6 SO 08/08/2022 LD

Rev	Status	Rev. Date	Purpose of revision	Drawn	Check'd	Appr'd

LEGEND

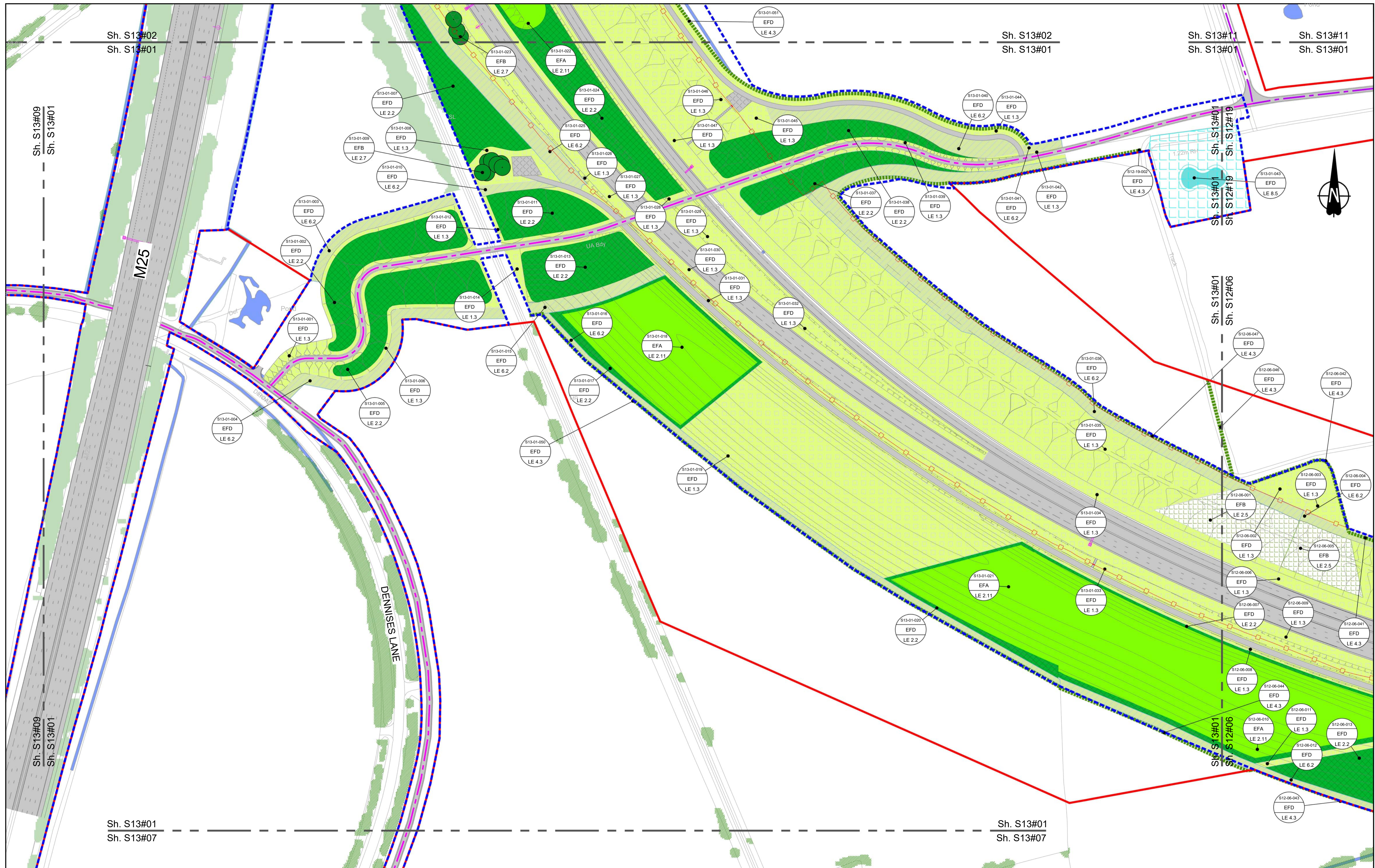
Order Limits	Registered Parks and Gardens
Permanent Acquisition of Land	Ramsar Sites
Area of Outstanding National Beauty (AONB)	Ancient Woodland
Site of Special Scientific Interest (SSSI)	Conservation Area

Client

Project

LOWER THAMES CROSSING

Status	Initial Status or WIP	Original Size	Revision
Application Document Number	TR010032/APP/6.2	A1	P01.6
Scale	AS SHOWN		
Drawing title			
ENVIRONMENTAL MASTERPLAN OVERVIEW PLAN SECTION 13			
Drawing Number			
HE540039-CJV-EGN-S13_EN000000_Z-DR-ZZ-00001			



Contains Ordnance Survey data. © Crown copyright and database rights 2022. Ordnance Survey 100030649

0 10 20 30 40 50 60 70 80 90 100 METRES

SCALE 1:1250 (A1)
SCALE 1:2500 (A3)

Section Overview Sheet. Refer to section overview plan at the start of the section.

Rev	Status	Rev. Date	Purpose of revision	Drawn	Chk'd	Appr'd
P01.4	S0	08/08/2022				LD

Environmental Mitigation Legend: Refer to Main Legend for baseline and scheme features (Dwg: HE540039-CJV-EGN-SZZ_EN000000_Z-DR-ZZ-00001).

Order Limits	Planting (LE 2)	Individual Trees (LE 5)
Permanent Acquisition of Land	Grassland (LE 1)	Wetland Habitats (LE 6)
LE 1.3 Species Rich Grassland	LE 2.1 Woodland	LE 5.1 Individual Trees
LE 1.31 Species Rich Chalk Grassland	LE 2.11 Woodland With Non-Native Species	LE 6.1 Wetland
LE 1.32 Species Rich Annual Wildflower Grassland	LE 2.2 Woodland Edge	LE 6.11 Water Bodies - Standing Water
LE 1.4 Rock and Scree	LE 2.22 Scrub Woodland	LE 6.12 Water Bodies and Associated Plants - Shallow Scrape
	LE 2.4 Linear Belt of Shrubs and Trees	LE 6.2 Banks and Ditches - High Tide Roost Features
	LE 2.5 Scrubs With Intermittent Trees	LE 6.4 Wet Grassland
	LE 2.7 Scattered Trees	LE 6.41 Marsh and Wet Grassland - Coastal Grazing Marsh
	Hedges (LE 4)	LE 8.1 Open Mosaic Habitat
	LE 4.3 Native Species Hedge (untrimmed)	LE 8.2 Ancient Woodland Compensation Mitigation Planting
	LE 4.4 Native Hedgerow With Trees	LE 8.3 Woodland Mitigation Planting
		LE 8.4 Wetland / Fenland Creation
		LE 8.5 Ecology Pond (indicative symbol only)
		LE 8.6 Acid Grassland Soil Salvage
		Hard Landscape Features (LE 7)
		LE 7.4 Reinforced Earth Bund
		Earthworks
		Proposed Contours

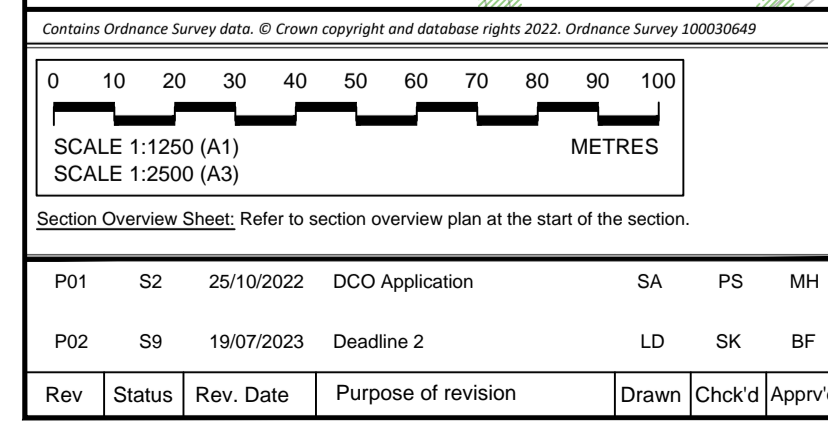
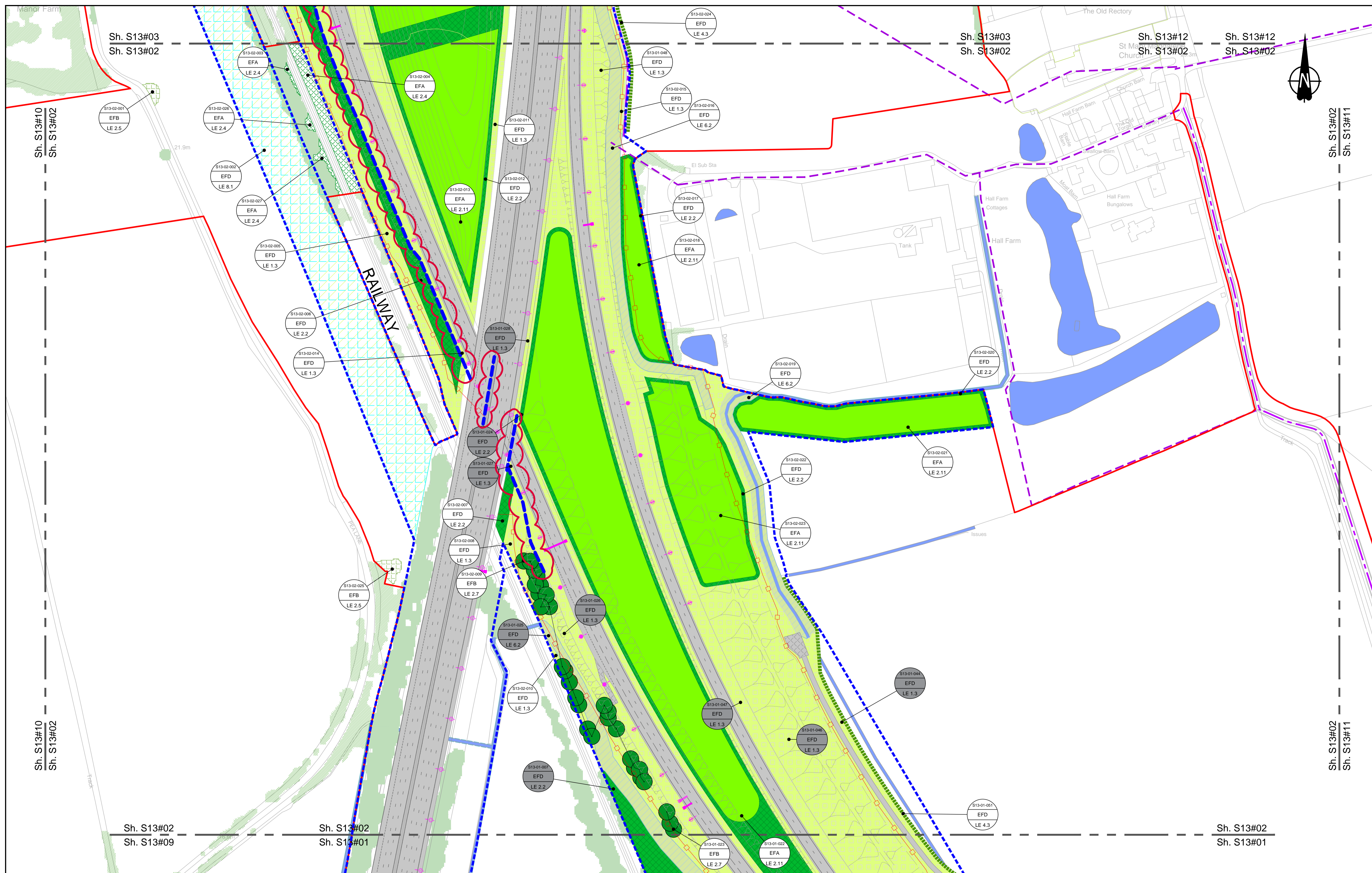
LE 7.7 Nitrogen Deposition (NDEP) Compensation Area	Ecological (E 3)	E 3.2 Ecological Fencing (inc. highway boundary fence)
Noise (E 1)	E 3.2 Ecological Culvert	E 3.2 Ecological Fencing (inc. highway boundary fence)
E 1.2 Acoustic Barrier-Built Elements (typically inc. highway boundary fence)	E 3.2 Ecological Culvert	E 3.2 Ecological Fencing (inc. highway boundary fence)
Water (E 2)	E 3.2 Ecological Culvert	E 3.2 Ecological Fencing (inc. highway boundary fence)
Flood Compensation Areas (E 2-FCA)	E 3.2 Ecological Culvert	E 3.2 Ecological Fencing (inc. highway boundary fence)
Flood Defence (E 2-FD)	E 3.2 Ecological Culvert	E 3.2 Ecological Fencing (inc. highway boundary fence)

Client:

Project: LOWER THAMES CROSSING

Status	Initial Status or WIP	Original Size	Revision
Application Document Number	TR010032/APP/6.2	A1	P01.4
Scale	1:1250		
Drawing title	ENVIRONMENTAL MASTERPLAN SECTION 13 SHEET 1		
Drawing Number	HE540039-CJV-EGN-S13_EN000000_Z-DR-ZZ-00002		

HE540039-CJV-EGN-S13_EN000000_Z-DR-ZZ-00002.dwg



Environmental Mitigation Legend: Refer to Main Legend for baseline and scheme features (Dwg: HE540039-CJV-EGN-SZZ_EN000000_Z-DR-ZZ-00001).

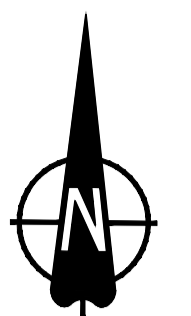
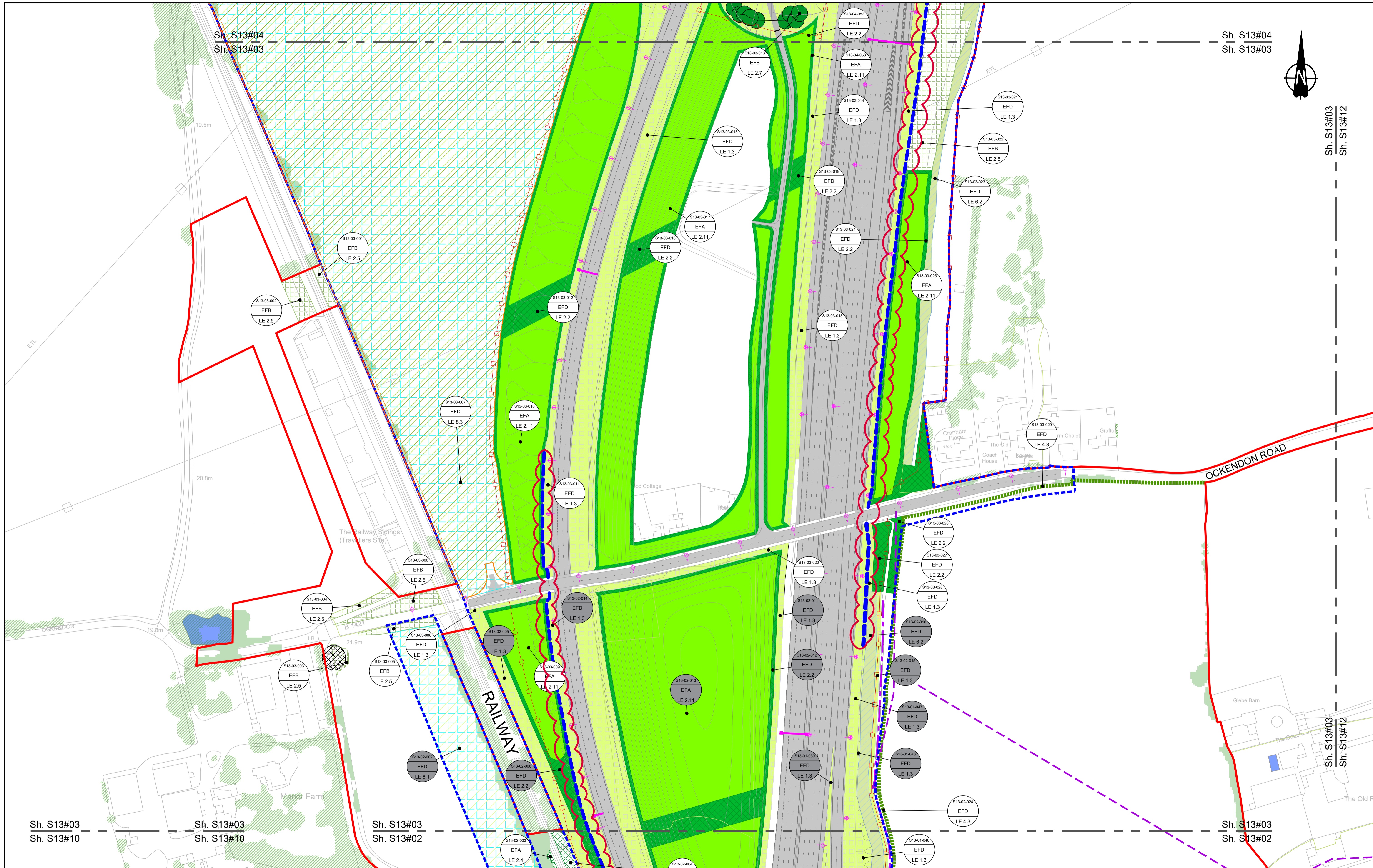
Order Limits	Planting (LE 2)	Individual Trees (LE 5)	Wetland Habitats (LE 6)	Hard Landscape Features (LE 7)
Order Limits	LE 2.1 Woodland	LE 5.1 Individual Trees	LE 6.1 Wet Grassland	LE 7.1 Wet Grassland
Permanent Acquisition of Land	LE 2.11 Woodland With Non-Native Species	LE 5.2 Scattered Trees	LE 6.11 Marsh and Wet Grassland - Coastal Grazing Marsh	LE 7.2 Wet Grassland
Grassland (LE 1)	LE 2.14 Wet / Carr Woodland	LE 6.2 Wetland Habitats (LE 6)	LE 6.2.1 Standing Water	LE 7.3 Wet Grassland
LE 1.3 Species Rich Grassland	LE 2.2 Woodland Edge	LE 6.3 Wetland Habitats (LE 6)	LE 6.2.2 Shallow Scrape	LE 7.4 Reinforced Earth Bund
LE 1.31 Species Rich Chalk Grassland	LE 2.22 Scrub Woodland	LE 6.4 Wetland Habitats (LE 6)	LE 6.2.3 Banks and Ditches	LE 7.5 Reinforced Earth Bund
LE 1.32 Species Rich Annual Wildflower Grassland	LE 2.4 Linear Belt of Shrubs and Trees	LE 6.5 Wetland Habitats (LE 6)	LE 6.2.4 High Tide Roost Features	LE 7.6 Proposed Contours
LE 1.4 Rock and Scree				

Ecological Habitats (LE 8)	Noise (LE 1)	Water (E 2)	Ecological (E 3)
LE 8.1 Open Mosaic Habitat	LE 1.1 Acoustic Barrier-Built Elements (typically inc. highway boundary fence)	LE 2.1 Flood Compensation Areas (E 2-FCA)	E 3.2 Ecological Culvert
LE 8.2 Ancient Woodland Compensation Planting	LE 1.2 Acoustic Barrier-Built Elements (typically inc. highway boundary fence)	LE 2.2 Flood Defence (E 2-FD)	E 3.2 Ecological Fencing (inc. highway boundary fence)
LE 8.3 Woodland Mitigation Planting			E 3.2 Ecological Fencing (inc. highway boundary fence)
LE 8.4 Wetland / Fenland Creation			E 3.2 Ecological Fencing (inc. highway boundary fence)
LE 8.5 Ecology Pond (indicative symbol only)			E 3.2 Ecological Fencing (inc. highway boundary fence)
LE 8.6 Acid Grassland Soil Salvage			E 3.2 Ecological Fencing (inc. highway boundary fence)

Client: **national highways**

Project: **LOWER THAMES CROSSING**

Status	PINS Submission	Original Size	A1	Revision	P02
Application Document Number	TR010032/APP/6.2	Scale	1:1250		
Drawing title	ENVIRONMENTAL MASTERPLAN SECTION 13 SHEET 2				
Drawing Number	HE540039-CJV-EGN-S13_EN000000_Z-DR-ZZ-00003				



Contains Ordnance Survey data: © Crown copyright and database rights 2022. Ordnance Survey 200030649

0 10 20 30 40 50 60 70 80 90 100 METRES

SCALE 1:1250 (A1)
SCALE 1:2500 (A3)

Section Overview Sheet: Refer to section overview plan at the start of the section.

P01	S2	27/10/2022	DCO Application	SA	PS	MH
P02	S9	19/07/2023	Deadline 2	LD	SK	BF

Rev	Status	Rev. Date	Purpose of revision	Drawn	Chk'd	Apprv'd

Order Limits Order Limits Permanent Acquisition of Land Grassland (LE 1) LE 1.3 Species Rich Grassland LE 1.31 Species Rich Chalk Grassland LE 1.32 Species Rich Annual Wildflower Grassland LE 1.4 Rock and Scree	Planting (LE 2) LE 2.1 Woodland LE 2.11 Woodland With Non-Native Species LE 2.14 Wet / Carr Woodland LE 2.2 Woodland Edge LE 2.22 Scrub Woodland LE 2.4 Linear Belt of Shrubs and Trees LE 2.5 Shrubs With Intermittent Trees LE 2.7 Scattered Trees LE 2.8 Scrub / Scattered Scrub Hedges (LE 4) LE 4.3 Native Species Hedge (untrimmed) LE 4.4 Native Hedgerow With Trees	Individual Trees (LE 5) LE 5.1 Individual Trees Wetland Habitats (LE 6) LE 6.11 Water Bodies - Standing Water LE 6.12 Water Bodies and Associated Plants - Shallow Scrape LE 6.2 Banks and Ditches LE 6.21 Banks and Ditches - High Tide Roost Features LE 6.4 Wet Grassland LE 6.41 Marsh and Wet Grassland - Coastal Grazing Marsh Hard Landscape Features (LE 7) LE 7.4 Reinforced Earth Bund Earthworks Proposed Contours	Ecological Habitats (LE 8) LE 8.1 Open Mosaic Habitat LE 8.2 Ancient Woodland Compensation Planting LE 8.3 Woodland Mitigation Planting LE 8.4 Wetland / Fenland Creation LE 8.5 Ecology Pond (indicative symbol only) LE 8.6 Acid Grassland Soil Salvage LE 8.7 Nitrogen Deposition (NDEP) Compensation Area Noise (E 1) E 1.2 Acoustic Barrier-Built Elements (Typically inc. highway boundary fence) Water (E 2) Flood Compensation Areas (E 2-FCA) Flood Defence (E 2-FD)	Ecological (E 3) E 3.2 Ecological Habitat Creation and Receptor Sites for Protected Species E 3.2 Dormouse Boxes E 3.2 Bat Boxes E 3.2 Ecological Culvert E 3.2 Bat Barn Block E 3.2 Bat Barn Owl Box E 3.2 Ecological Fencing (inc. highway boundary fence)
---	---	---	--	--

Client: **national highways**

Project: **LOWER THAMES CROSSING**

Status	PINS Submission	Original Size	A1	Revision	P02
Application Document Number	TR010032/APP/6.2	Scale	1:1250		
Drawing title	ENVIRONMENTAL MASTERPLAN SECTION 13 SHEET 3				
Drawing Number	HE540039-CJV-EGN-S13_EN000000_Z-DR-ZZ-00004				

HE540039-CJV-EGN-S13_EN000000_Z-DR-ZZ-00004.dwg



Contains Ordnance Survey data. © Crown copyright and database rights 2022. Ordnance Survey 10003049

0 10 20 30 40 50 60 70 80 90 100 METRES

SCALE 1:1250 (A1)
SCALE 1:2500 (A3)

Section Overview Sheet: Refer to section overview plan at the start of the section.

P01	S2	25/10/2022	DCO Application	SA	PS	MH
P02	S9	19/07/2023	Deadline 2	LD	SK	BF
Rev	Status	Rev. Date	Purpose of revision	Drawn	Chkd	Apprv'd

Environmental Mitigation Legend: Refer to Main Legend for baseline and scheme features (Dwg: HE540039-CJV-EGN-SZ2_EN000000_Z-DR-ZZ-00001).

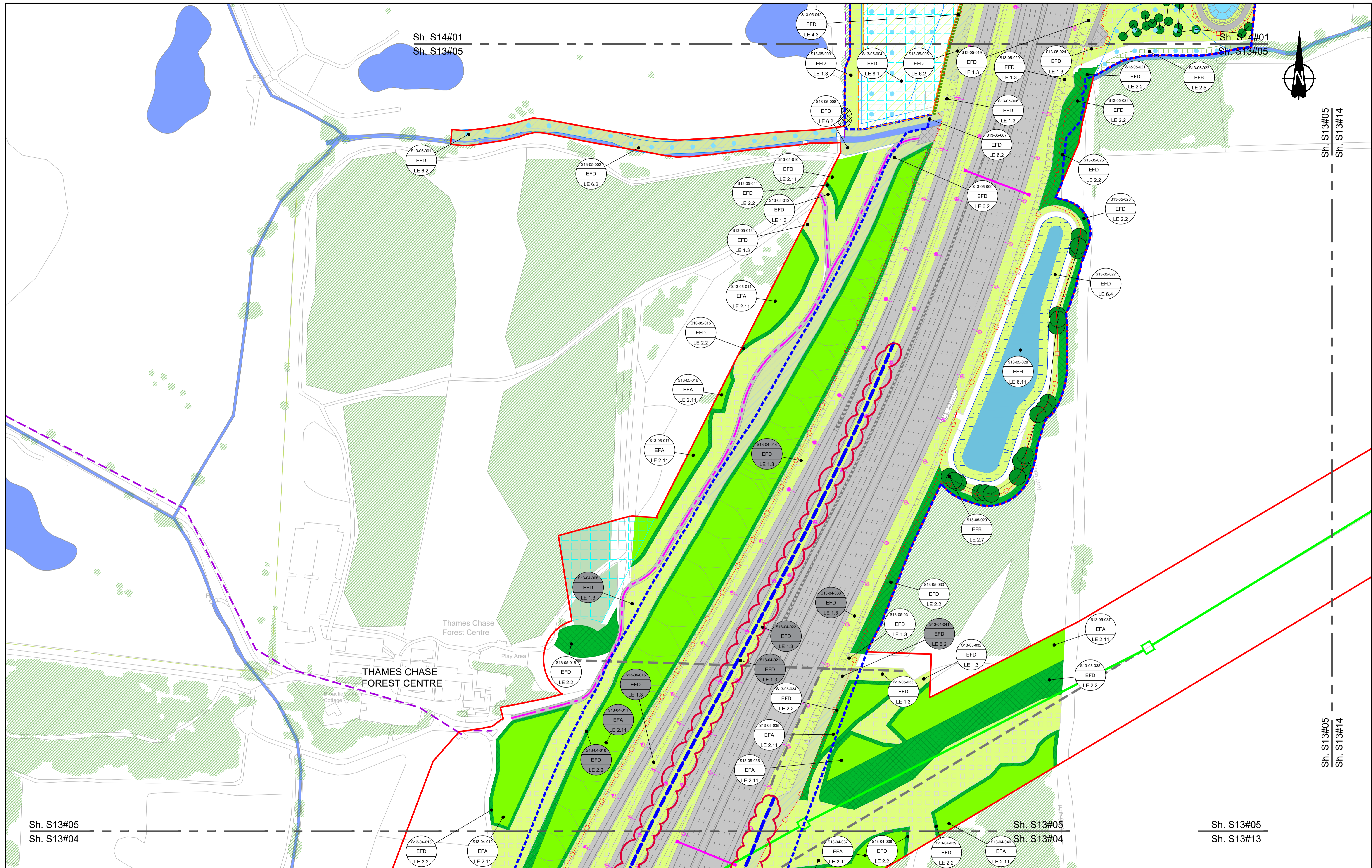
Order Limits Permanent Acquisition of Land Grassland (LE 1) LE 1.3 Species Rich Chalk Grassland LE 1.31 Species Rich Chalk Grassland LE 1.32 Species Rich Annual Wildflower Grassland LE 1.4 Rock and Scree	Planting (LE 2) LE 2.1 Woodland LE 2.11 Woodland With Non-Native Species LE 2.14 Wet / Carr Woodland LE 2.2 Woodland Edge LE 2.22 Scrub Woodland LE 2.4 Linear Belt of Shrubs and Trees LE 2.5 Shrubs With Intermittent Trees LE 2.7 Scattered Trees Hedges (LE 4) LE 4.3 Native Species Hedge (untrimmed) LE 4.4 Native Hedgerow With Trees	Individual Trees (LE 5) LE 5.1 Individual Trees Wetland Habitats (LE 6) LE 6.11 Water Bodies - Standing Water LE 6.12 Water Bodies and Associated Plants - Shallow Scrape LE 6.2 Banks and Ditches LE 6.21 Banks and Ditches - High Tide Root Features LE 6.4 Wet Grassland LE 6.41 Marsh and Wet Grassland - Coastal Grazing Marsh Hard Landscape Features (LE 7) LE 7.4 Reinforced Earth Band Earthworks Proposed Contours	Ecological Habitats (LE 8) LE 8.1 Open Mosaic Habitat LE 8.2 Ancient Woodland Compensation Planting LE 8.3 Woodland Mitigation Planting LE 8.4 Wetland / Farmland Creation LE 8.5 Ecology Pond (indicative symbol only) LE 8.6 Acid Grassland Soil Salvage	Noise (E 1) LE 8.7 Nitrogen Deposition (NDEP) Compensation Area Water (E 2) E 2.1 Acoustic Barrier-Built Elements (typically inc. highway boundary fence) E 2.2 Flood Compensation Areas (E 2-FCA) E 2.3 Flood Defence (E 2-FD)	Ecological (E 3) E 3.2 Ecological Habitat Creation and Receptor Sites for Protected Species E 3.2 Dormouse Boxes E 3.2 Bat Boxes E 3.2 Ecological Culvert E 3.2 Bat Barn Block E 3.2 Barn Owl Box E 3.2 Ecological Fencing (inc. highway boundary fence)
---	---	--	---	--	--

Client: **national highways**

Project: **LOWER THAMES CROSSING**

Status	PINS Submission	Original Size	A1	Revision	P02
Application Document Number	TR010032/APP/6.2	Scale	1:1250		
Drawing title	ENVIRONMENTAL MASTERPLAN SECTION 13 SHEET 4				
Drawing Number	HE540039-CJV-EGN-S13_EN000000_Z-DR-ZZ-00005				

HE540039-CJV-EGN-S13_EN000000_Z-DR-ZZ-00005.dwg



Contains Ordnance Survey data. © Crown copyright and database rights 2022. Ordnance Survey 100030649

0 10 20 30 40 50 60 70 80 90 100 METRES

SCALE 1:1250 (A1)
SCALE 1:2500 (A3)

Section Overview Sheet: Refer to section overview plan at the start of the section.

P01	S2	25/10/2022	DCO Application	SA	PS	MH
P02	S9	19/07/2023	Deadline 2	LD	SK	BF
Rev	Status	Rev. Date	Purpose of revision	Drawn	Check'd	Apprv'd

Environmental Mitigation Legend: Refer to Main Legend for baseline and scheme features (Dwg: HE540039-CJV-EGN-SZ3_EN000000_Z-DR-ZZ-00001).

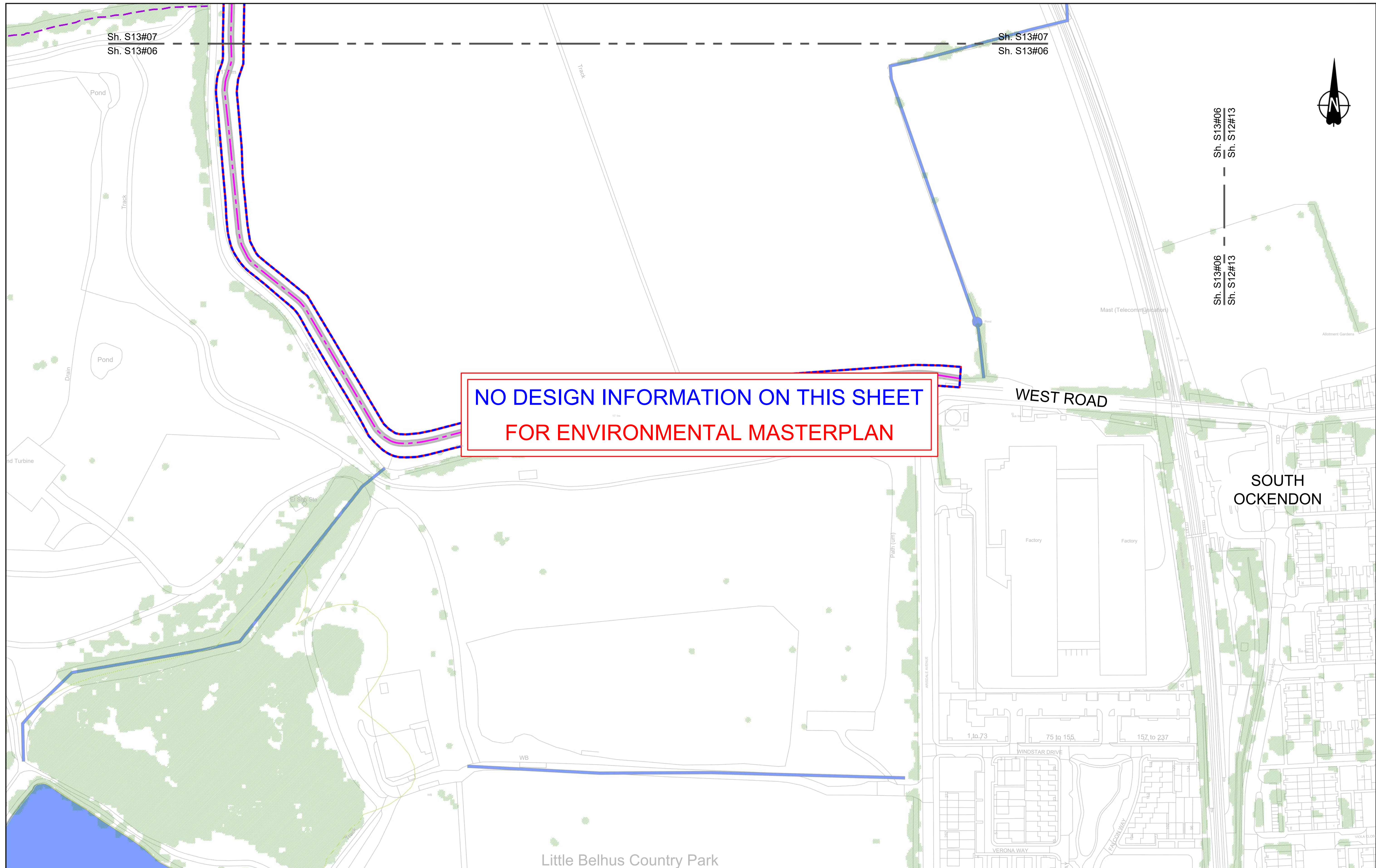
Order Limits Permanent Acquisition of Land	Planting (LE 2) LE 2.1 Woodland LE 2.11 Woodland With Non-Native Species LE 2.14 Wet / Carr Woodland LE 2.2 Woodland Edge LE 2.22 Scrub Woodland LE 2.4 Linear Belt of Shrubs and Trees	LE 2.5 Shrubs With Intermittent Trees LE 2.7 Scattered Trees LE 2.8 Scrub / Scattered Scrub Hedges (LE 4) LE 4.3 Native Species Hedge (untrimsed) LE 4.4 Native Hedgerow With Trees	Individual Trees (LE 5) LE 5.1 Individual Trees Wetland Habitats (LE 6) LE 6.11 Water Bodies - Standing Water LE 6.12 Water Bodies and Associated Plants - Shallow Scrape LE 6.2 Banks and Ditches LE 6.21 Banks and Ditches - High Tide Roost Features	LE 6.4 Wet Grassland LE 6.41 Marsh and Wet Grassland - Coastal Grazing Marsh LE 7.4 Reinforced Earth Band Earthworks Proposed Contours	Ecological Habitats (LE 8) LE 8.1 Open Mosaic Habitat LE 8.2 Ancient Woodland Compensation Planting LE 8.3 Woodland Mitigation Planting LE 8.4 Wetland / Fenland Creation LE 8.5 Ecology Pond (indicative symbol only) LE 8.6 Acid Grassland Soil Salvage	Ecological (E 3) E 3.2 Ecological Habitat Creation and Receptor Sites for Protected Species E 3.2 Dormouse Boxes E 3.2 Bat Boxes E 3.2 Ecological Culvert E 3.2 Bat Barn Block	Noise (E 1) E 1.2 Acoustic Barrier-Built Elements (typically inc. highway boundary fence) Water (E 2) LE 8.7 Nitrogen Deposition (NDEP) Compensation Area Flood Compensation Areas (E 2-FCA) Flood Defence (E 2-FD)	E 3.2 Barn Owl Box E 3.2 Ecological Fencing (inc. highway boundary fence)
--	--	---	---	---	--	--	--	--

Client: **national highways**

Project: **LOWER THAMES CROSSING**

Status: PINS Submission	Original Size: A1	Revision: P02
Application Document Number: TR010032/APP/6.2	Scale: 1:1250	
Drawing Title: ENVIRONMENTAL MASTERPLAN SECTION 13 SHEET 5		
Drawing Number: HE540039-CJV-EGN-S13_EN000000_Z-DR-ZZ-00006		

HE540039-CJV-EGN-S13_EN000000_Z-DR-ZZ-00006.dwg



**NO DESIGN INFORMATION ON THIS SHEET
FOR ENVIRONMENTAL MASTERPLAN**

Contains Ordnance Survey data. © Crown copyright and database rights 2022. Ordnance Survey 100030649

0 10 20 30 40 50 60 70 80 90 100
SCALE 1:1250 (A1)
SCALE 1:2500 (A3)
METRES

Section Overview Sheet: Refer to section overview plan at the start of the section.

Rev	Status	Rev. Date	Purpose of revision	Drawn	Chkd	Apprv'd
P01.5	SO	08/08/2022				LD

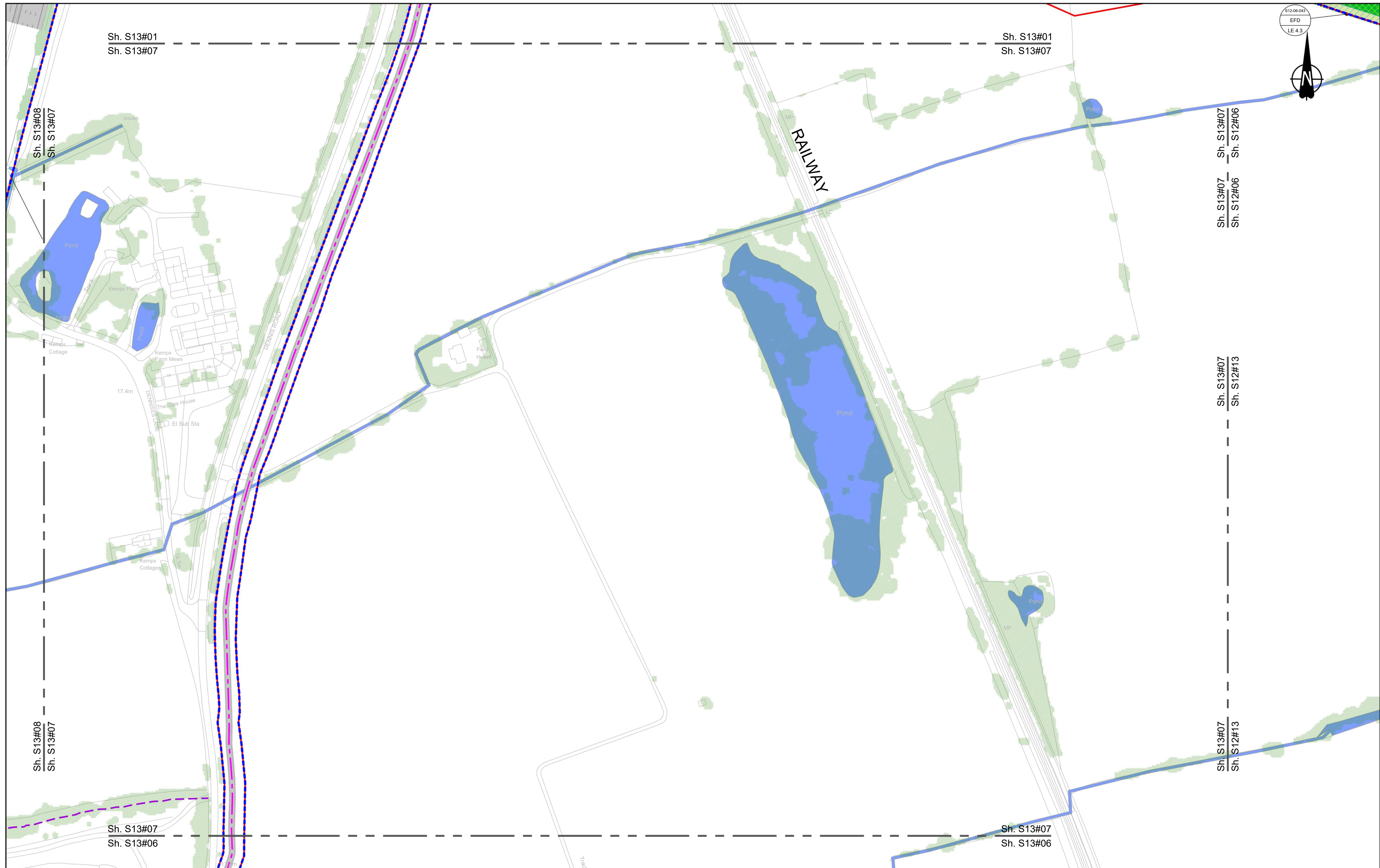
Environmental Mitigation Legend: Refer to Main Legend for baseline and scheme features (Dwg: HE540039-CJV-EGN-SZZ_EN000000_Z-DR-ZZ-00001).

Order Limits Permanent Acquisition of Land Grassland (LE 1) LE 1.3 Species Rich Grassland LE 1.31 Species Rich Chalk Grassland LE 1.32 Species Rich Annual Wildflower Grassland LE 1.4 Rock and Scree	Planting (LE 2) LE 2.1 Woodland LE 2.11 Woodland With Non-Native Species LE 2.14 Wet / Carr Woodland LE 2.2 Woodland Edge LE 2.22 Scrub Woodland LE 2.4 Linear Belt of Shrubs and Trees LE 2.5 Shrubs With Intermittent Trees LE 2.7 Scattered Trees LE 2.8 Scrub / Scattered Scrub Hedges (LE 4) LE 4.3 Native Species Hedge (untrimmed) LE 4.4 Native Hedgerow With Trees	Individual Trees (LE 5) LE 5.1 Individual Trees Wetland Habitats (LE 6) LE 6.11 Water Bodies - Standing Water LE 6.12 Water Bodies and Associated Plants - Shallow Scrape LE 6.2 Barks and Ditches LE 6.21 Banks and Ditches - High Tide Root Features LE 6.4 Wet Grassland LE 6.41 Marsh and Wet Grassland - Coastal Grazing Marsh Hard Landscape Features (LE 7) LE 7.4 Reinforced Earth Bund Earthworks Proposed Contours	Ecological Habitats (LE 8) LE 8.1 Open Mosaic Habitat LE 8.2 Ancient Woodland Compensation Planting LE 8.3 Woodland Mitigation Planting LE 8.4 Wetland / Farmland Creation LE 8.5 Ecology Pond (indicative symbol only) LE 8.6 Acid Grassland Soil Salvage LE 8.7 Nitrogen Deposition (NDEP) Compensation Area Noise (E 1) E 1.2 Acoustic Barrier-Built Elements (typically inc. highway boundary fence) Water (E 2) Flood Compensation Areas (E 2-FCA) Flood Defence (E 2-FD)	Ecological (E 3) E 3.2 Ecological Habitat Creation and Receptor sites for Protected Species E 3.2 Dormouse Boxes E 3.2 Bat Boxes E 3.2 Ecological Culvert E 3.2 Bat Barn Block E 3.2 Barn Owl Box E 3.2 Ecological Fencing (inc. highway boundary fence)
---	---	--	---	--

Client: **national highways**

Project: **LOWER THAMES CROSSING**

Status	Initial Status or WIP	Original Size	Revision
Application Document Number	TR010032/APP/6.2	A1	P01.5
Scale	1:1250		
Drawing title	ENVIRONMENTAL MASTERPLAN SECTION 13 SHEET 6		
Drawing Number	HE540039-CJV-EGN-S13_EN000000_Z-DR-ZZ-00007		



S12-06-043
EFD
LE 4.3



Contains Ordnance Survey data. © Crown copyright and database rights 2022. Ordnance Survey 100030649

0 10 20 30 40 50 60 70 80 90 100
SCALE 1:1250 (A1)
SCALE 1:2500 (A3)
METRES

Section Overview Sheet: Refer to section overview plan at the start of the section.

Rev	Status	Rev. Date	Purpose of revision	Drawn	Chkd	Apprv'd
P01.3	SO	14/06/2021				

Environmental Mitigation Legend: Refer to Main Legend for baseline and scheme features (Dwg: HE540039-CJV-EGN-SZZ_EN000000_Z-DR-ZZ-00001).

<p>Order Limits</p> <ul style="list-style-type: none"> Order Limits Permanent Acquisition of Land <p>Grassland (LE 1)</p> <ul style="list-style-type: none"> LE 1.3 Species Rich Grassland LE 1.31 Species Rich Chalk Grassland LE 1.32 Species Rich Annual Wildflower Grassland LE 1.4 Rock and Scree 	<p>Planting (LE 2)</p> <ul style="list-style-type: none"> LE 2.1 Woodland LE 2.11 Woodland With Non-Native Species LE 2.14 Wet / Carr Woodland LE 2.2 Woodland Edge LE 2.22 Scrub Woodland LE 2.4 Linear Belt of Shrubs and Trees <p>Hedges (LE 4)</p> <ul style="list-style-type: none"> LE 4.3 Native Species Hedge (untrimmed) LE 4.4 Native Hedgerow With Trees 	<p>Individual Trees (LE 5)</p> <ul style="list-style-type: none"> LE 5.1 Individual Trees <p>Wetland Habitats (LE 6)</p> <ul style="list-style-type: none"> LE 6.11 Water Bodies - Standing Water LE 6.12 Water Bodies and Associated Plants - Shallow Scrape LE 6.2 Banks and Ditches LE 6.21 Banks and Ditches - High Tide Root Features 	<p>Wetland Habitats (LE 6)</p> <ul style="list-style-type: none"> LE 6.4 Wet Grassland LE 6.41 Marsh and Wet Grassland - Coastal Grazing Marsh <p>Hard Landscape Features (LE 7)</p> <ul style="list-style-type: none"> LE 7.4 Reinforced Earth Bund <p>Earthworks</p> <ul style="list-style-type: none"> Proposed Contours 	<p>Ecological Habitats (LE 8)</p> <ul style="list-style-type: none"> LE 8.1 Open Mosaic Habitat LE 8.2 Ancient Woodland Compensation Planting LE 8.3 Woodland Mitigation Planting LE 8.4 Wetland / Farmland Creation LE 8.5 Ecology Pond (indicative symbol only) LE 8.6 Acid Grassland Soil Salvage 	<p>Noise (E 1)</p> <ul style="list-style-type: none"> LE 8.7 Nitrogen Deposition (NDEP) Compensation Area E 1.2 Acoustic Barrier-Built Elements (typically inc. highway boundary fence) <p>Water (E 2)</p> <ul style="list-style-type: none"> Flood Compensation Areas (E 2-FCA) Flood Defence (E 2-FD) 	<p>Ecological (E 3)</p> <ul style="list-style-type: none"> E 3.2 Ecological Habitat Creation and Receptor sites for Protected Species E 3.2 Dormouse Boxes E 3.2 Bat Boxes E 3.2 Ecological Culvert E 3.2 Bat Barn Block E 3.2 Ecological Fencing (inc. highway boundary fence) E 3.2 Barn Owl Box
--	---	---	--	---	---	--

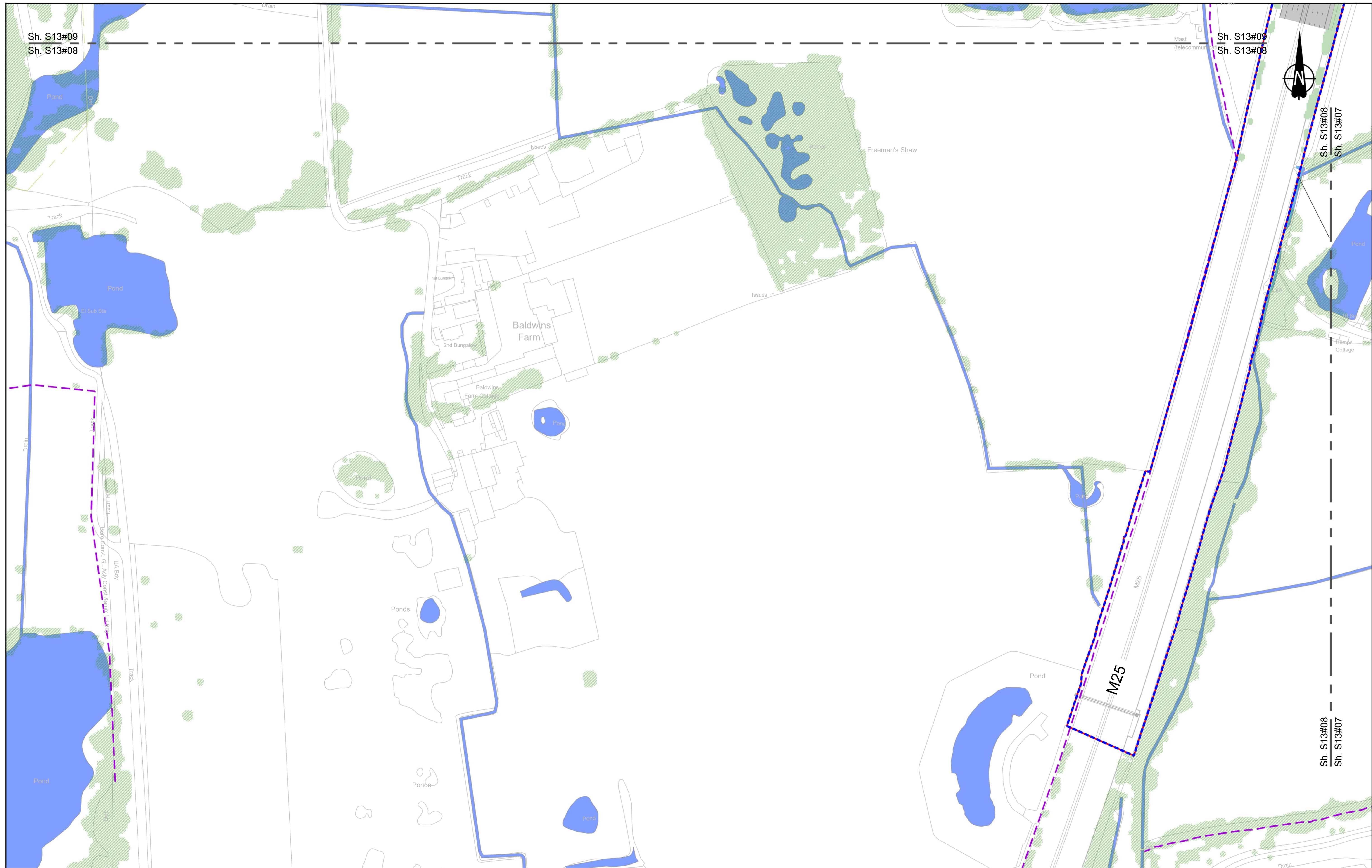
Client

Project

LOWER THAMES CROSSING

Status	Initial Status or WIP	Original Size	Revision
Application Document Number	TR010032/APP/6.2	A1	P01.3
Drawing title	ENVIRONMENTAL MASTERPLAN SECTION 13 SHEET 7		
Drawing Number	HE540039-CJV-EGN-S13_EN000000_Z-DR-ZZ-00008		
Scale 1:1250			

HE540039-CJV-EGN-S13_EN000000_Z-DR-ZZ-00008.dwg



Sh. S13#09
Sh. S13#08

Sh. S13#09
Sh. S13#08

Sh. S13#08
Sh. S13#07

Sh. S13#08
Sh. S13#07

Contains Ordnance Survey data. © Crown copyright and database rights 2022. Ordnance Survey 100030649

0 10 20 30 40 50 60 70 80 90 100 METRES

SCALE 1:1250 (A1)
SCALE 1:2500 (A3)

Section Overview Sheet: Refer to section overview plan at the start of the section.

Rev	Status	Rev. Date	Purpose of revision	Drawn	Chkd	Apprv'd
P01.5	SO	08/08/2022				LD

Environmental Mitigation Legend: Refer to Main Legend for baseline and scheme features (Dwg: HE540039-CJV-EGN-SZZ_EN000000_Z-DR-ZZ-00001).

<p>Order Limits</p> <ul style="list-style-type: none"> Permanent Acquisition of Land <p>Grassland (LE 1)</p> <ul style="list-style-type: none"> LE 1.3 Species Rich Grassland LE 1.31 Species Rich Chalk Grassland LE 1.32 Species Rich Annual Wildflower Grassland LE 1.4 Rock and Scree 	<p>Planting (LE 2)</p> <ul style="list-style-type: none"> LE 2.1 Woodland LE 2.11 Woodland With Non-Native Species LE 2.14 Wet / Carr Woodland LE 2.2 Woodland Edge LE 2.22 Scrub Woodland LE 2.4 Linear Belt of Shrubs and Trees <p>Hedges (LE 4)</p> <ul style="list-style-type: none"> LE 4.3 Native Species Hedge (untrimmed) LE 4.4 Native Hedgerow With Trees 	<p>Individual Trees (LE 5)</p> <ul style="list-style-type: none"> LE 5.1 Individual Trees <p>Wetland Habitats (LE 6)</p> <ul style="list-style-type: none"> LE 6.11 Water Bodies - Standing Water LE 6.12 Water Bodies and Associated Plants - Shallow Scrape LE 6.2 Barks and Ditches LE 6.21 Barks and Ditches - High Tide Root Features <p>Hard Landscape Features (LE 7)</p> <ul style="list-style-type: none"> LE 7.4 Reinforced Earth Bund <p>Earthworks</p> <ul style="list-style-type: none"> Proposed Contours 	<p>Ecological Habitats (LE 8)</p> <ul style="list-style-type: none"> LE 8.1 Open Mosaic Habitat LE 8.2 Ancient Woodland Compensation Planting LE 8.3 Woodland Mitigation Planting LE 8.4 Wetland / Farmland Creation LE 8.5 Ecology Pond (indicative symbol only) LE 8.6 Acid Grassland Soil Salvage 	<p>Noise (E 1)</p> <ul style="list-style-type: none"> LE 8.7 Nitrogen Deposition (NDEP) Compensation Area E 1.2 Acoustic Barrier-Built Elements (typically inc. highway boundary fence) <p>Water (E 2)</p> <ul style="list-style-type: none"> Flood Compensation Areas (E 2-FCA) Flood Defence (E 2-FD) 	<p>Ecological (E 3)</p> <ul style="list-style-type: none"> E 3.2 Ecological Habitat Creation and Receptor sites for Protected Species E 3.2 Dormouse Boxes E 3.2 Bat Boxes E 3.2 Ecological Culvert E 3.2 Bat Barn Block E 3.2 Barn Owl Box E 3.2 Ecological Fencing (inc. highway boundary fence)
--	---	--	---	---	--

Client

Project

LOWER THAMES CROSSING

Status	Initial Status or WIP	Original Size	Revision
Application Document Number	TR010032/APP/6.2	A1	P01.5
Scale	1:1250		
Drawing title	ENVIRONMENTAL MASTERPLAN SECTION 13 SHEET 8		
Drawing Number	HE540039-CJV-EGN-S13_EN000000_Z-DR-ZZ-00009		



Contains Ordnance Survey data. © Crown copyright and database rights 2022. Ordnance Survey 100030649

0 10 20 30 40 50 60 70 80 90 100 METRES

SCALE 1:1250 (A1)
SCALE 1:2500 (A3)

Section Overview Sheet: Refer to section overview plan at the start of the section

Rev	Status	Rev. Date	Purpose of revision	Drawn	Chkd	Apprv'd
P01.4	SO	08/08/2022				LD

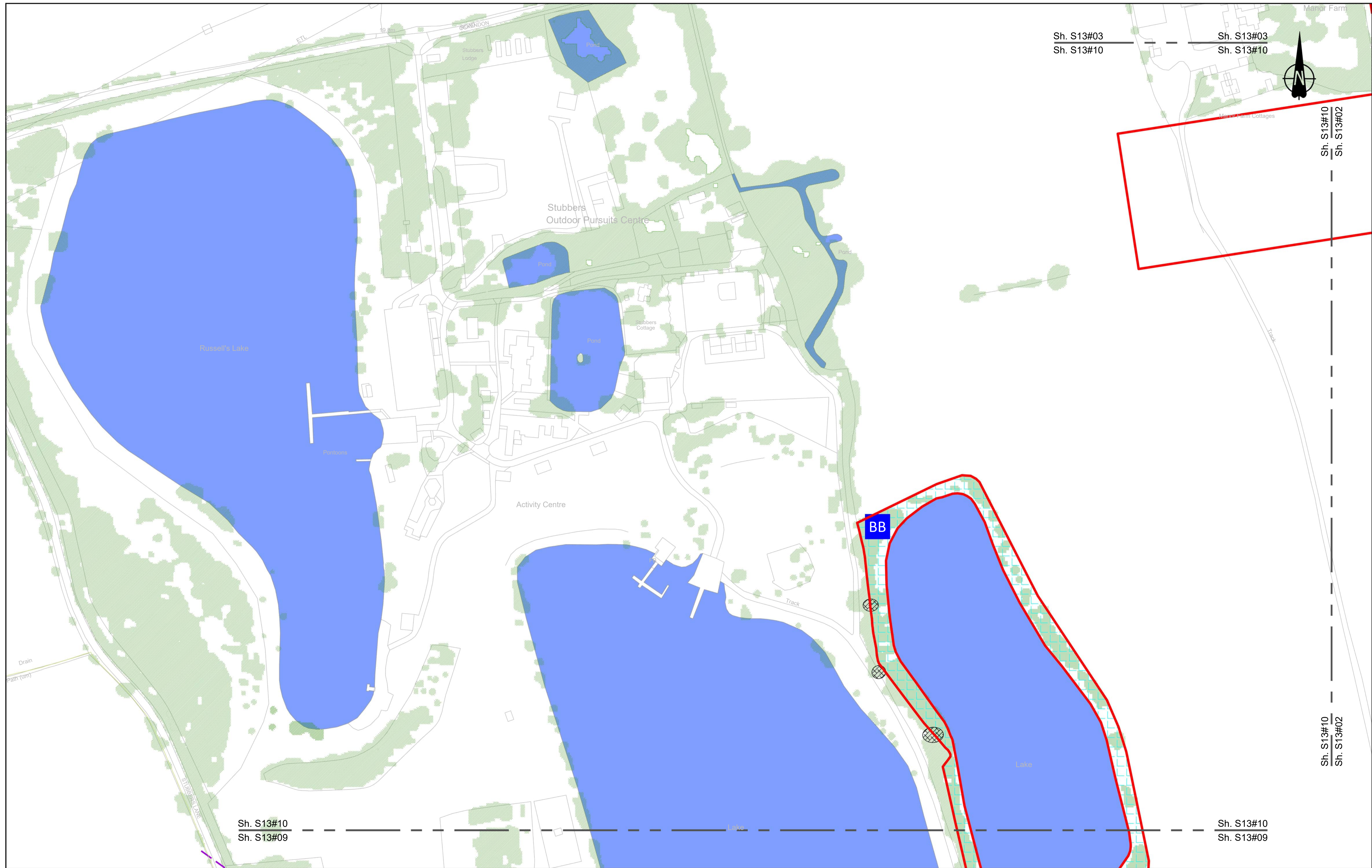
Environmental Mitigation Legend: Refer to Main Legend for baseline and scheme features (Dwg: HE540039-CJV-EGN-SZZ_EN000000_Z-DR-ZZ-00001).

<p>Order Limits</p> <ul style="list-style-type: none"> Permanent Acquisition of Land <p>Grassland (LE 1)</p> <ul style="list-style-type: none"> LE 1.3 Species Rich Chalk Grassland LE 1.31 Species Rich Chalk Grassland LE 1.32 Species Rich Annual Wildflower Grassland LE 1.4 Rock and Scree 	<p>Planting (LE 2)</p> <ul style="list-style-type: none"> LE 2.1 Woodland LE 2.11 Woodland With Non-Native Species LE 2.14 Wet / Carr Woodland LE 2.2 Woodland Edge LE 2.22 Scrub Woodland LE 2.4 Linear Belt of Shrubs and Trees <p>Hedges (LE 4)</p> <ul style="list-style-type: none"> LE 4.3 Native Species Hedge (untrimm'd) LE 4.4 Native Hedgerow With Trees 	<p>Individual Trees (LE 5)</p> <ul style="list-style-type: none"> LE 5.1 Individual Trees <p>Wetland Habitats (LE 6)</p> <ul style="list-style-type: none"> LE 6.11 Water Bodies - Standing Water LE 6.12 Water Bodies and Associated Plants - Shallow Scrape LE 6.2 Banks and Ditches LE 6.21 Banks and Ditches - High Tide Root Features 	<p>Wet Grassland</p> <ul style="list-style-type: none"> LE 6.4 Wet Grassland <p>Marsh and Wet Grassland - Coastal Grazing Marsh</p> <ul style="list-style-type: none"> LE 6.41 Marsh and Wet Grassland - Coastal Grazing Marsh <p>Hard Landscape Features (LE 7)</p> <ul style="list-style-type: none"> LE 7.4 Reinforced Earth Bund <p>Earthworks</p> <ul style="list-style-type: none"> Proposed Contours 	<p>Ecological Habitats (LE 8)</p> <ul style="list-style-type: none"> LE 8.1 Open Mosaic Habitat LE 8.2 Ancient Woodland Compensation Planting LE 8.3 Woodland Mitigation Planting LE 8.4 Wetland / Farmland Creation LE 8.5 Ecology Pond (indicative symbol only) LE 8.6 Acid Grassland Soil Salvage 	<p>Noise (E 1)</p> <ul style="list-style-type: none"> LE 8.7 Nitrogen Deposition (NDEP) Compensation Area E 1.2 Acoustic Barrier-Built Elements (typically inc. highway boundary fence) <p>Water (E 2)</p> <ul style="list-style-type: none"> Flood Compensation Areas (E 2-FCA) Flood Defence (E 2-FD) 	<p>Ecological (E 3)</p> <ul style="list-style-type: none"> E 3.2 Ecological Habitat Creation and Receptor sites for Protected Species E 3.2 Dormouse Boxes BB E 3.2 Bat Boxes EC E 3.2 Ecological Culvert BBB E 3.2 Bat Barn Block E 3.2 Ecological Fencing (inc. highway boundary fence) E 3.2 Barn Owl Box
--	---	---	---	---	---	--

Client: **national highways**

Project: **LOWER THAMES CROSSING**

Status	Initial Status or WIP	Original Size	Revision
Application Document Number	TR010032/APP/6.2	A1	P01.4
Scale	1:1250		
Drawing title	ENVIRONMENTAL MASTERPLAN SECTION 13 SHEET 9		
Drawing Number	HE540039-CJV-EGN-S13_EN000000_Z-DR-ZZ-00010		



Contains Ordnance Survey data. © Crown copyright and database rights 2022. Ordnance Survey 100030649

0 10 20 30 40 50 60 70 80 90 100 METRES

SCALE 1:1250 (A1)
SCALE 1:2500 (A3)

Section Overview Sheet: Refer to section overview plan at the start of the section.

P01.5 SO 25/03/2022 LD

Rev	Status	Rev. Date	Purpose of revision	Drawn	Chkd	Apprv'd

Environmental Mitigation Legend: Refer to Main Legend for baseline and scheme features (Dwg: HE540039-CJV-EGN-SZZ_EN000000_Z-DR-ZZ-00001).

Order Limits	Grassland (LE 1)	Planting (LE 2)	Individual Trees (LE 5)	Ecological Habitats (LE 8)	Noise (E 1)	Water (E 2)	Ecological (E 3)
Order Limits	LE 1.3 Species Rich Grassland	LE 2.1 Woodland	LE 5.1 Individual Trees	LE 8.1 Open Mosaic Habitat	LE 1.2 Acoustic Barrier-Built Elements (typically inc. highway boundary fence)	LE 2.1 Nitrogen Deposition (NDEP) Compensation Area	E 3.2 Ecological Habitat Creation and Receptor sites for Protected Species
Permanent Acquisition of Land	LE 1.31 Species Rich Chalk Grassland	LE 2.11 Woodland With Non-Native Species	LE 5.2 Wet Grassland	LE 8.2 Ancient Woodland Compensation Planting	E 1.2 Acoustic Barrier-Built Elements (typically inc. highway boundary fence)	LE 2.2 Wetland Habitats (LE 6)	E 3.2 Ecological Fencing (inc. highway boundary fence)
LE 1.32 Species Rich Annual Wildflower Grassland	LE 2.14 Wet / Carr Woodland	LE 6.1 Water Bodies - Standing Water	LE 6.4 Marsh and Wet Grassland - Coastal Grazing Marsh	LE 8.3 Woodland Mitigation Planting	E 2.1 Flood Compensation Areas (E 2-FCA)	LE 2.22 Scrub Woodland	E 3.2 Dormouse Boxes
LE 1.4 Rock and Scree	LE 2.2 Woodland Edge	LE 6.12 Water Bodies and Associated Plants - Shallow Scrape	LE 7.4 Reinforced Earth Bund	LE 8.4 Wetland / Farmland Creation	E 2.2 Flood Defence (E 2-FD)	LE 2.4 Linear Belt of Shrubs and Trees	E 3.2 Bat Boxes
		LE 6.2 Barks and Ditches	Earthworks	LE 8.5 Ecology Pond (indicative symbol only)			E 3.2 Ecological Culvert
		LE 6.21 Banks and Ditches - High Tide Root Features	Proposed Contours	LE 8.6 Acid Grassland Soil Salvage			E 3.2 Bat Barn Block

Client

national highways

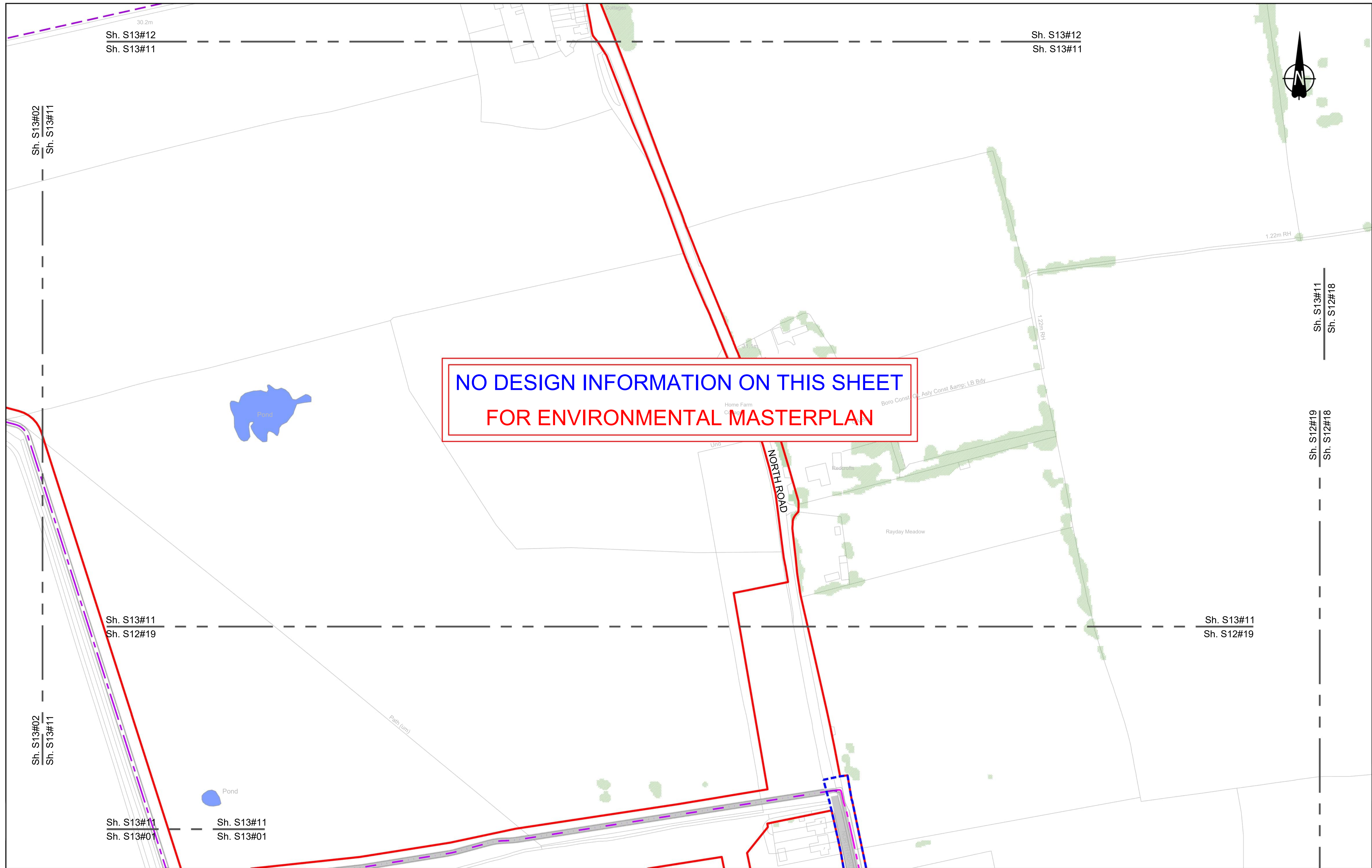
Project

LOWER THAMES CROSSING

Status	Initial Status or WIP	Original Size	Revision
Application Document Number	TR010032/APP/6.2	A1	P01.5
Drawing title	ENVIRONMENTAL MASTERPLAN SECTION 13 SHEET 10		
Drawing Number	HE540039-CJV-EGN-S13_EN000000_Z-DR-ZZ-00011		

Scale 1:1250

HE540039-CJV-EGN-S13_EN000000_Z-DR-ZZ-00011.dwg



**NO DESIGN INFORMATION ON THIS SHEET
FOR ENVIRONMENTAL MASTERPLAN**

Contains Ordnance Survey data. © Crown copyright and database rights 2022. Ordnance Survey 100030649

0 10 20 30 40 50 60 70 80 90 100
SCALE 1:1250 (A1)
SCALE 1:2500 (A3)
METRES

Section Overview Sheet: Refer to section overview plan at the start of the section.

Rev	Status	Rev. Date	Purpose of revision	Drawn	Chkd	Apprv'd
P01.4	SO	08/08/2022				LD

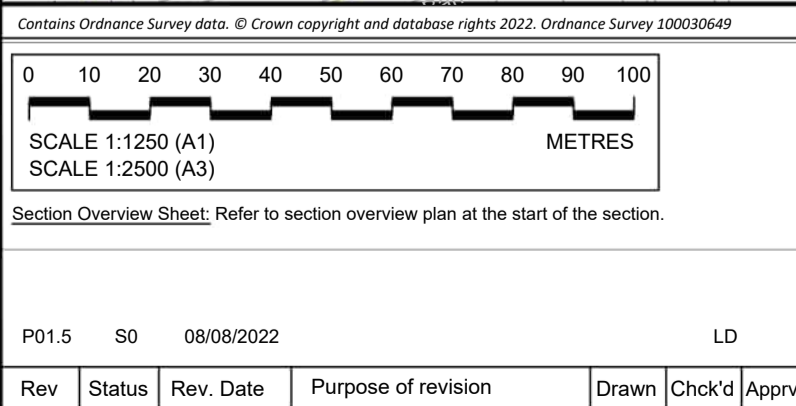
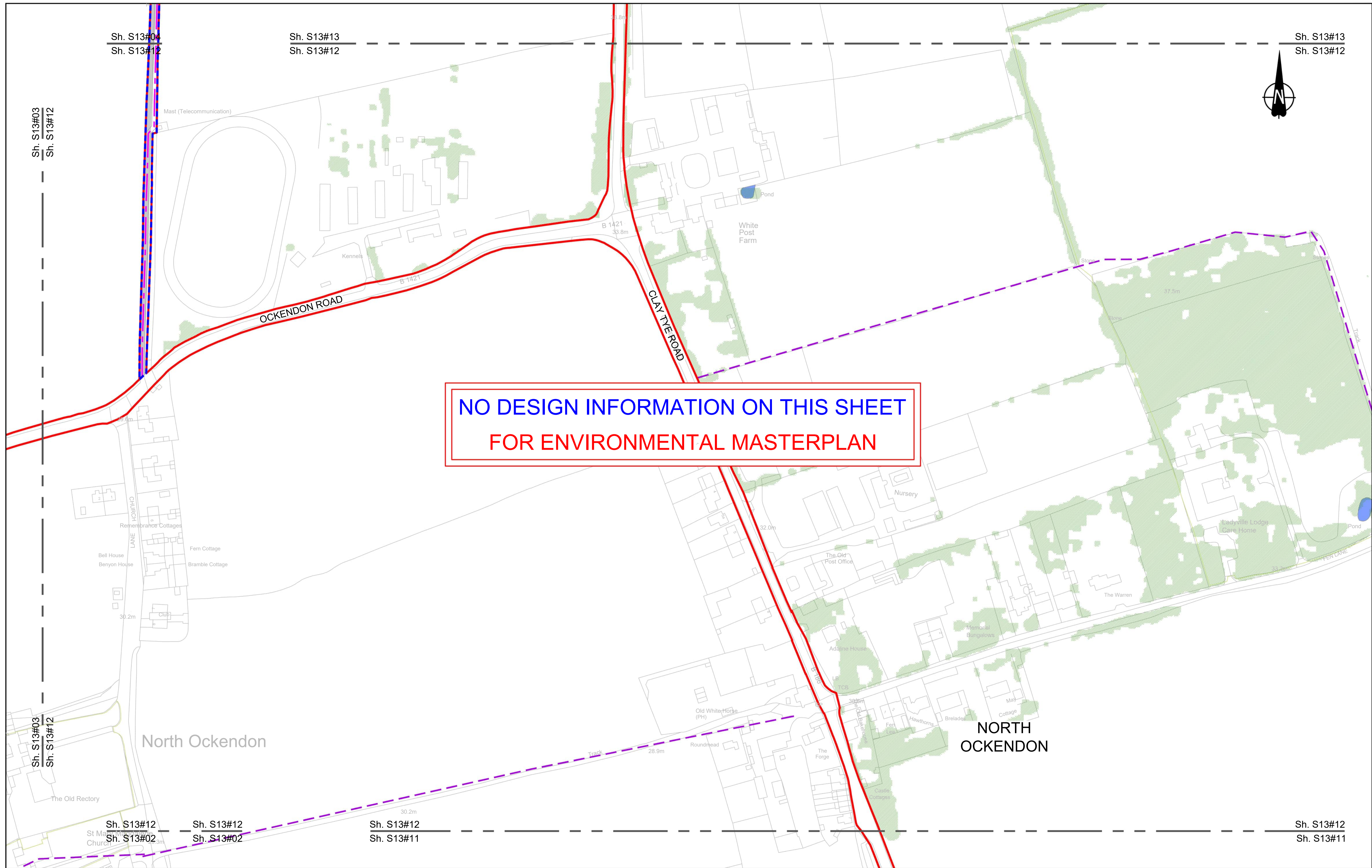
Environmental Mitigation Legend: Refer to Main Legend for baseline and scheme features (Dwg: HE540039-CJV-EGN-SZZ_EN000000_Z-DR-ZZ-00001).

Order Limits Permanent Acquisition of Land Grassland (LE 1) LE 1.3 Species Rich Grassland LE 1.31 Species Rich Chalk Grassland LE 1.32 Species Rich Annual Wildflower Grassland LE 1.4 Rock and Scree	Planting (LE 2) LE 2.1 Woodland LE 2.11 Woodland With Non-Native Species LE 2.14 Wet / Carr Woodland LE 2.2 Woodland Edge LE 2.22 Scrub Woodland LE 2.4 Linear Belt of Shrubs and Trees	LE 2.5 Shrubs With Intermittent Trees LE 2.7 Scattered Trees LE 2.8 Scrub / Scattered Scrub Hedges (LE 4) LE 4.3 Native Species Hedge (untrimmed) LE 4.4 Native Hedgerow With Trees	Individual Trees (LE 5) LE 5.1 Individual Trees Wetland Habitats (LE 6) LE 6.11 Water Bodies - Standing Water LE 6.12 Water Bodies and Associated Plants - Shallow Scrape LE 6.2 Banks and Ditches LE 6.21 Banks and Ditches - High Tide Root Features	LE 6.4 Wet Grassland LE 6.41 Marsh and Wet Grassland - Coastal Grazing Marsh Hard Landscape Features (LE 7) LE 7.4 Reinforced Earth Bund Earthworks Proposed Contours	Ecological Habitats (LE 8) LE 8.1 Open Mosaic Habitat LE 8.2 Ancient Woodland Compensation Planting LE 8.3 Woodland Mitigation Planting LE 8.4 Wetland / Farmland Creation LE 8.5 Ecology Pond (indicative symbol only) LE 8.6 Acid Grassland Soil Salvage	LE 8.7 Nitrogen Deposition (NDEP) Compensation Area Noise (E 1) E 1.2 Acoustic Barrier-Built Elements (typically inc. highway boundary fence) Water (E 2) Flood Compensation Areas (E 2-FCA) Flood Defence (E 2-FD)	Ecological (E 3) E 3.2 Ecological Habitat Creation and Receptor sites for Protected Species E 3.2 Dormouse Boxes E 3.2 Bat Boxes E 3.2 Ecological Culvert E 3.2 Bat Barn Block E 3.2 Barn Owl Box E 3.2 Ecological Fencing (inc. highway boundary fence)
---	--	---	--	--	---	--	--

Client: **national highways**

Project: **LOWER THAMES CROSSING**

Status	Initial Status or WIP	Original Size	A1	Revision	P01.4
Application Document Number	TR010032/APP/6.2	Scale	1:1250		
Drawing title	ENVIRONMENTAL MASTERPLAN SECTION 13 SHEET 11				
Drawing Number	HE540039-CJV-EGN-S13_EN000000_Z-DR-ZZ-00012				



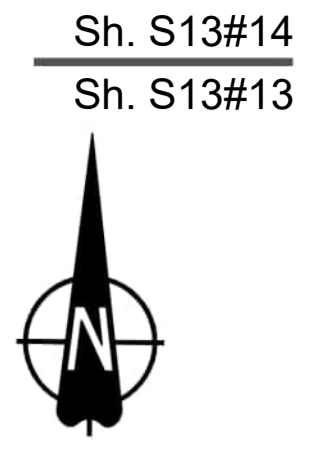
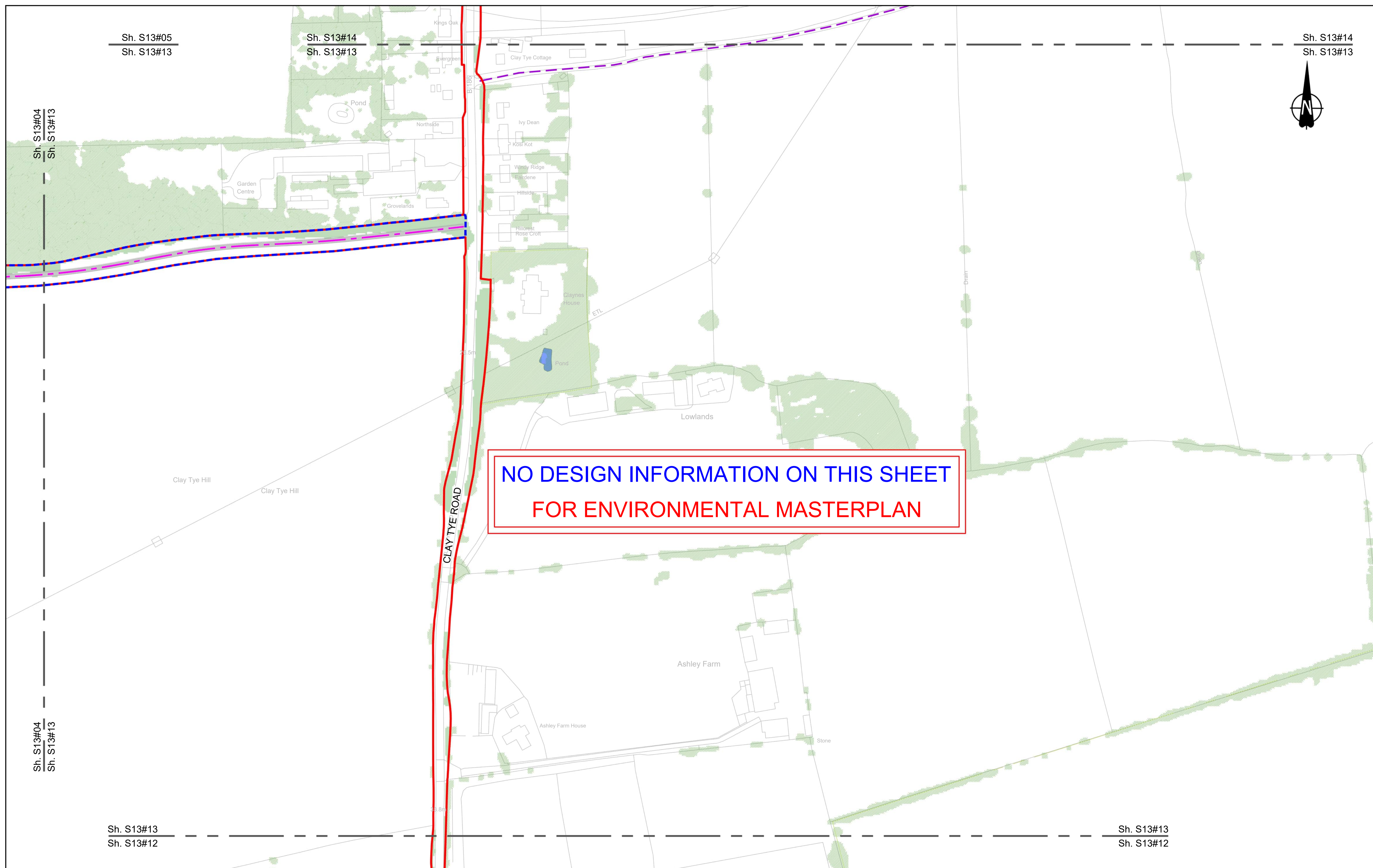
Environmental Mitigation Legend: Refer to Main Legend for baseline and scheme features (Dwg: HE540039-CJV-EGN-SZZ_EN000000_Z-DR-ZZ-00001).

Order Limits Permanent Acquisition of Land	Planting (LE 2) LE 2.1 Woodland LE 2.11 Woodland With Non-Native Species LE 2.14 Wet / Carr Woodland LE 2.2 Woodland Edge LE 2.22 Scrub Woodland LE 2.4 Linear Belt of Shrubs and Trees	Individual Trees (LE 5) LE 5.1 Individual Trees	Wetland Habitats (LE 6) LE 6.1 Marsh and Wet Grassland - Coastal Grazing Marsh LE 6.12 Water Bodies and Associated Plants - Shallow Scrape LE 6.2 Banks and Ditches LE 6.21 Banks and Ditches - High Tide Root Features	Ecological Habitats (LE 8) LE 8.1 Open Mosaic Habitat LE 8.2 Ancient Woodland Compensation Planting LE 8.3 Woodland Mitigation Planting LE 8.4 Wetland / Farmland Creation LE 8.5 Ecology Pond (indicative symbol only) LE 8.6 Acid Grassland Soil Salvage	Noise (E 1) E 1.2 Acoustic Barrier-Built Elements (typically inc. highway boundary fence)	Water (E 2) Flood Compensation Areas (E 2-FCA) Flood Defence (E 2-FD)	Ecological (E 3) E 3.2 Ecological Habitat Creation and Receptor sites for Protected Species E 3.2 Dormouse Boxes E 3.2 Bat Boxes E 3.2 Ecological Culvert E 3.2 Bat Barn Block	Hard Landscape Features (LE 7) LE 7.4 Reinforced Earth Bund	Earthworks Proposed Contours	E 3.2 Ecological Fencing (inc. highway boundary fence)
--	--	---	--	---	---	--	--	---	--	---

Client: national highways

Project: LOWER THAMES CROSSING

Status: Initial Status or WIP	Original Size: A1	Revision: P01.5
Application Document Number: TR010032/APP/6.2	Scale: 1:1250	
Drawing title: ENVIRONMENTAL MASTERPLAN SECTION 13 SHEET 12		
Drawing Number: HE540039-CJV-EGN-S13_EN000000_Z-DR-ZZ-00013		



NO DESIGN INFORMATION ON THIS SHEET
FOR ENVIRONMENTAL MASTERPLAN

Contains Ordnance Survey data. © Crown copyright and database rights 2022. Ordnance Survey 100030649

0 10 20 30 40 50 60 70 80 90 100 METRES

SCALE 1:1250 (A1)
SCALE 1:2500 (A3)

Section Overview Sheet. Refer to section overview plan at the start of the section.

Rev	Status	Rev. Date	Purpose of revision	Drawn	Chk'd	Appr'd
P01.5	S0	08/08/2022				LD

Environmental Mitigation Legend: Refer to Main Legend for baseline and scheme features (Dwg: HE540039-CJV-EGN-SZZ_EN000000_Z-DR-ZZ-00001).

<ul style="list-style-type: none"> Order Limits Permanent Acquisition of Land Grassland (LE 1) <ul style="list-style-type: none"> LE 1.3 Species Rich Grassland LE 1.31 Species Rich Chalk Grassland LE 1.32 Species Rich Annual Wildflower Grassland LE 1.4 Rock and Scree 	<ul style="list-style-type: none"> Planting (LE 2) <ul style="list-style-type: none"> LE 2.1 Woodland LE 2.11 Woodland With Non-Native Species LE 2.2 Woodland Edge LE 2.22 Scrub Woodland LE 2.4 Linear Belt of Shrubs and Trees 	<ul style="list-style-type: none"> LE 2.5 Shrubs With Intermittent Trees LE 2.7 Scattered Trees LE 2.8 Scrub / Scattered Scrub Hedges (LE 4) <ul style="list-style-type: none"> LE 4.3 Native Species Hedge (untrimmed) LE 4.4 Native Hedgerow With Trees 	<ul style="list-style-type: none"> Individual Trees (LE 5) <ul style="list-style-type: none"> LE 5.1 Individual Trees Wetland Habitats (LE 6) <ul style="list-style-type: none"> LE 6.11 Water Bodies - Standing Water LE 6.12 Water Bodies and Associated Plants - Shallow Scrape LE 6.2 Banks and Ditches LE 6.21 Banks and Ditches - High Tide Roost Features Hard Landscape Features (LE 7) <ul style="list-style-type: none"> LE 7.4 Reinforced Earth Bund Earthworks <ul style="list-style-type: none"> Proposed Contours 	<ul style="list-style-type: none"> Ecological Habitats (LE 8) <ul style="list-style-type: none"> LE 8.1 Open Mosaic Habitat LE 8.2 Ancient Woodland Compensation Planting LE 8.3 Woodland Mitigation Planting LE 8.4 Wetland / Fenland Creation LE 8.5 Ecology Pond (indicative symbol only) LE 8.6 Acid Grassland Soil Salvage LE 8.7 Nitrogen Deposition (NDEP) Compensation Area Noise (E 1) <ul style="list-style-type: none"> E 1.2 Acoustic Barrier-Built Elements (typically inc. highway boundary fence) Water (E 2) <ul style="list-style-type: none"> Flood Compensation Areas (E 2-FCAs) Flood Defence (E 2-FD) 	<ul style="list-style-type: none"> Ecological (E 3) <ul style="list-style-type: none"> E 3.2 Ecological Habitat Creation and Receptor sites for Protected Species E 3.2 Dormouse Boxes E 3.2 Bat Boxes E 3.2 Ecological Culvert E 3.2 Bat Barn Block E 3.2 Barn Owl Box E 3.2 Ecological Fencing (inc. highway boundary fence)
---	--	--	--	--	---

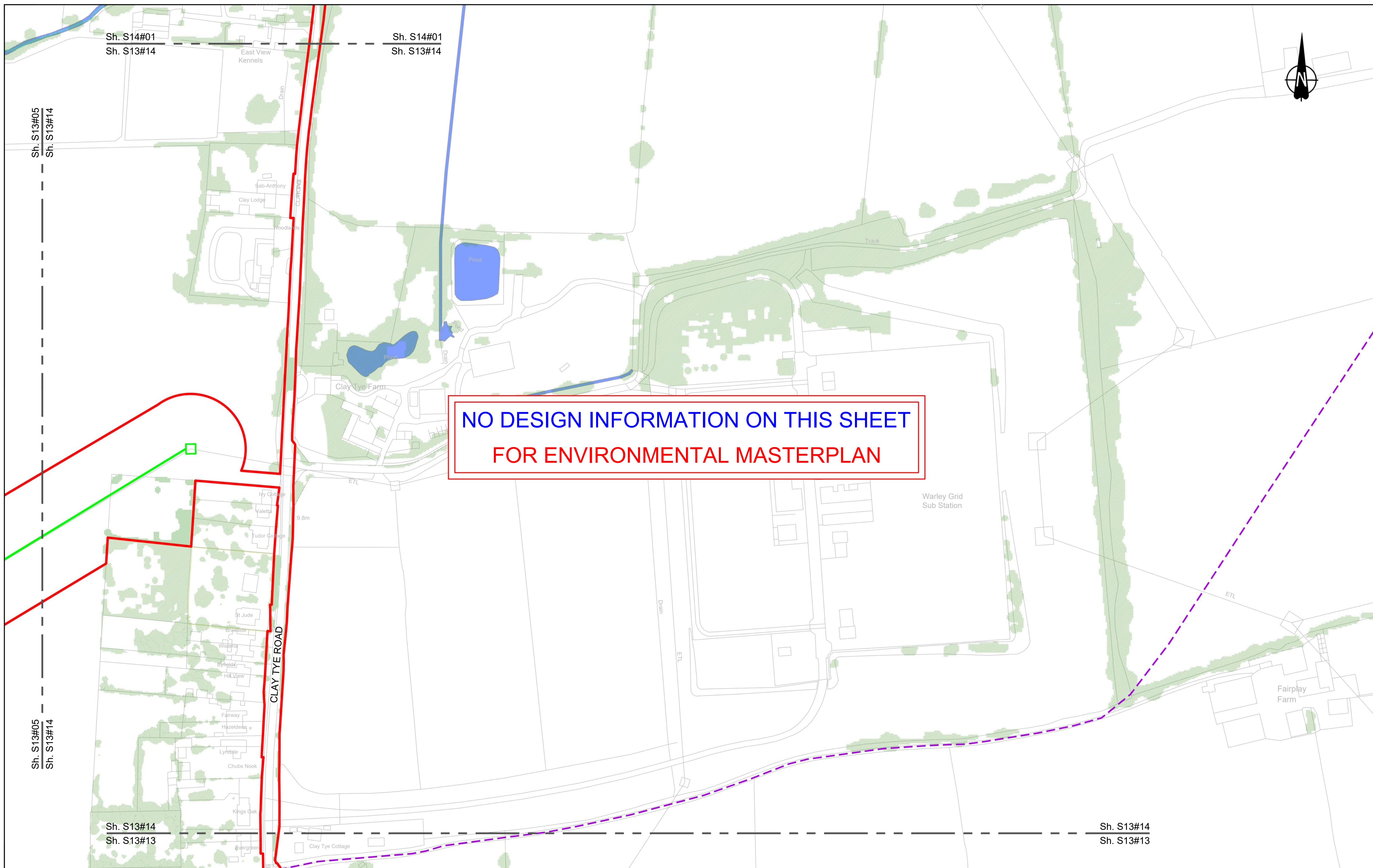
Client

Project

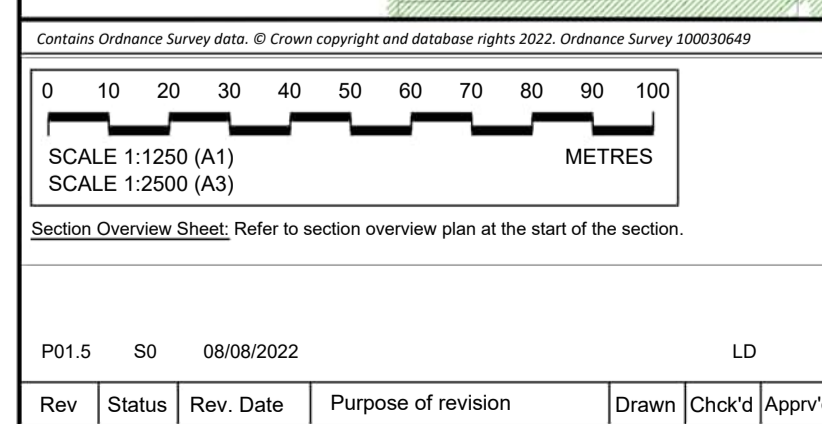
LOWER THAMES CROSSING

Status	Initial Status or WIP	Original Size	Revision
Application Document Number	TR010032/APP/6.2	A1	P01.5
Drawing title	ENVIRONMENTAL MASTERPLAN SECTION 13 SHEET 13		
Drawing Number	HE540039-CJV-EGN-S13_EN000000_Z-DR-ZZ-00014		

Scale 1:1250



NO DESIGN INFORMATION ON THIS SHEET
FOR ENVIRONMENTAL MASTERPLAN



Environmental Mitigation Legend: Refer to Main Legend for baseline and scheme features (Dwg: HE540039-CJV-EGN-SZZ_EN000000_Z-DR-ZZ-00001).

Order Limits - Order Limits	Planting (LE 2) - LE 2.1 Woodland - LE 2.11 Woodland With Non-Native Species - LE 2.2 Wet / Carr Woodland - LE 2.2 Woodland Edge - LE 2.22 Scrub Woodland - LE 2.4 Linear Belt of Shrubs and Trees	Individual Trees (LE 5) - LE 5.1 Individual Trees	Wetland Habitats (LE 6) - LE 6.1 Water Bodies - Standing Water - LE 6.12 Water Bodies and Associated Plants - Shallow Scrape - LE 6.2 Banks and Ditches - LE 6.21 Banks and Ditches - High Tide Roost Features	Ecological Habitats (LE 8) - LE 8.1 Open Mosaic Habitat - LE 8.2 Ancient Woodland Compensation Planting - LE 8.3 Woodland Mitigation Planting - LE 8.4 Wetland / Fenland Creation - LE 8.5 Ecology Pond (indicative symbol only) - LE 8.6 Acid Grassland Soil Salvage	Ecological (E 3) - E 3.2 Ecological Habitat Creation and Receptor sites for Protected Species - E 3.2 Dormouse Boxes - E 3.2 Bat Boxes - E 3.2 Ecological Culvert - E 3.2 Bat Barn Block
Grassland (LE 1) - LE 1.3 Species Rich Grassland - LE 1.31 Species Rich Chalk Grassland - LE 1.32 Species Rich Annual Wildflower Grassland - LE 1.4 Rock and Scree	Order Limits - Order Limits	Wetland Habitats (LE 6) - LE 6.41 Marsh and Wet Grassland - Coastal Grazing Marsh - LE 6.4 Wet Grassland	Hard Landscape Features (LE 7) - LE 7.4 Reinforced Earth Bund	Noise (E 1) - E 1.2 Acoustic Barrier-Built Elements (typically inc. highway boundary fence)	Ecological (E 3) - E 3.2 Ecological Fencing (inc. highway boundary fence)
Permanent Acquisition of Land - Permanent Acquisition of Land	Hedges (LE 4) - LE 4.3 Native Species Hedge (untrimmed) - LE 4.4 Native Hedgerow With Trees	Earthworks - Proposed Contours	Water (E 2) - E 2.1 Nitrogen Deposition (NDEP) Compensation Area - E 2.2 Flood Compensation Areas (E 2-FCA) - E 2.3 Flood Defence (E 2-FD)	Ecological (E 3) - E 3.2 Ecological Fencing (inc. highway boundary fence)	

Client: national highways

Project: LOWER THAMES CROSSING

Status: Initial Status or WIP	Original Size: A1	Revision: P01.5
Application Document Number: TR010032/APP/6.2	Scale: 1:1250	
Drawing title: ENVIRONMENTAL MASTERPLAN SECTION 13 SHEET 14		
Drawing Number: HE540039-CJV-EGN-S13_EN000000_Z-DR-ZZ-00015		

If you need help accessing this or any other National Highways information, please call **0300 123 5000** and we will help you.

© Crown copyright 2023.

You may re-use this information (not including logos) free of charge in any format or medium, under the terms of the Open Government Licence. To view this licence:

visit www.nationalarchives.gov.uk/doc/open-government-licence/

write to the **Information Policy Team, The National Archives, Kew, London TW9 4DU**, or email psi@nationalarchives.gsi.gov.uk.

Mapping (where present): © Crown copyright and database rights 2023 OS 100030649. You are permitted to use this data solely to enable you to respond to, or interact with, the organisation that provided you with the data. You are not permitted to copy, sub-license, distribute or sell any of this data to third parties in any form.

If you have any enquiries about this publication email info@nationalhighways.co.uk or call **0300 123 5000***.

*Calls to 03 numbers cost no more than a national rate call to an 01 or 02 number and must count towards any inclusive minutes in the same way as 01 and 02 calls. These rules apply to calls from any type of line including mobile, BT, other fixed line or payphone. Calls may be recorded or monitored.

Printed on paper from well-managed forests and other controlled sources when issued directly by National Highways.

Registered office Bridge House, 1 Walnut Tree Close, Guildford GU1 4LZ

National Highways Limited registered in England and Wales number 09346363